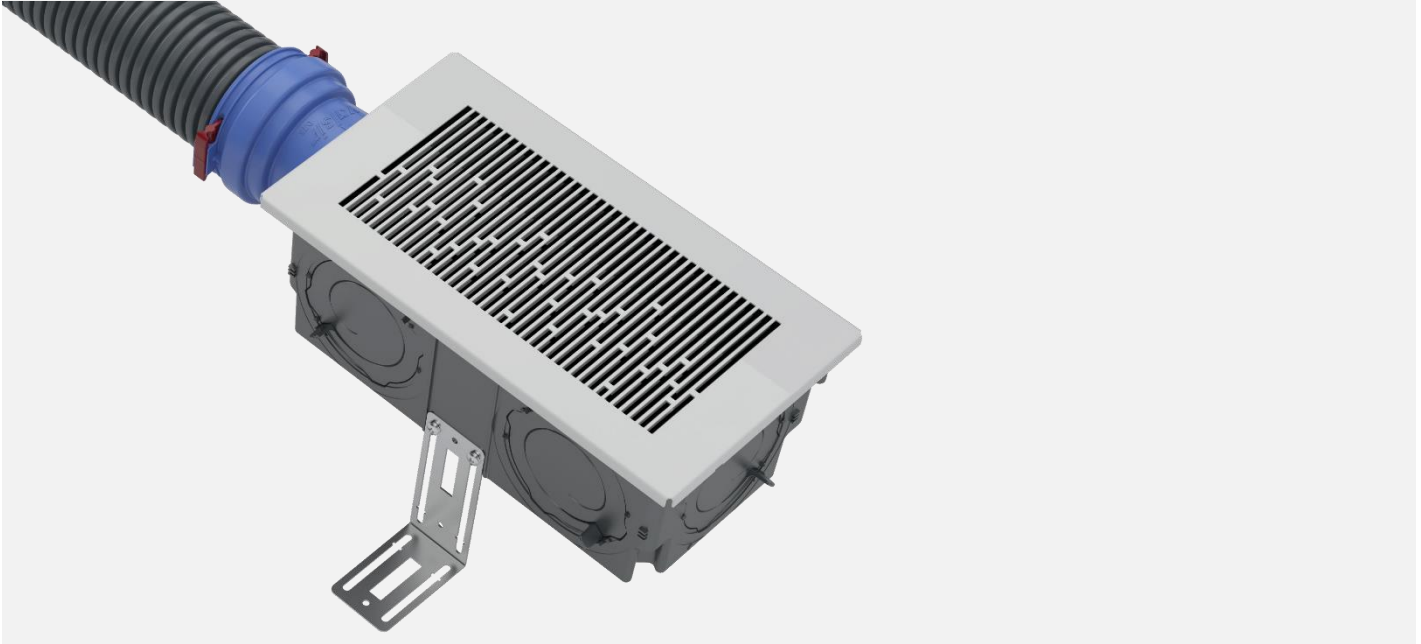


ARIASILENT GRIDS



Air intake and extraction grids inside the building



AriaSilent Urban and Diamond

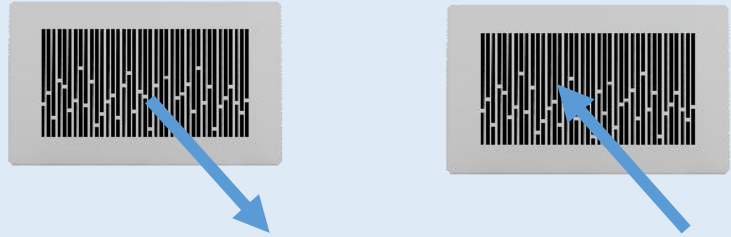
The AriaSilent Urban and Diamond grids represent the grids dedicated to the immission and extraction of air in Heat Recovery Ventilation systems inside the building.

Both grids need to be combined with the AriaSilent Point grill holder through the use of the grill support which guarantees an integral coupling between the grill and the grill holder.

Table: Characteristics of AriaSilent Urban and Diamond

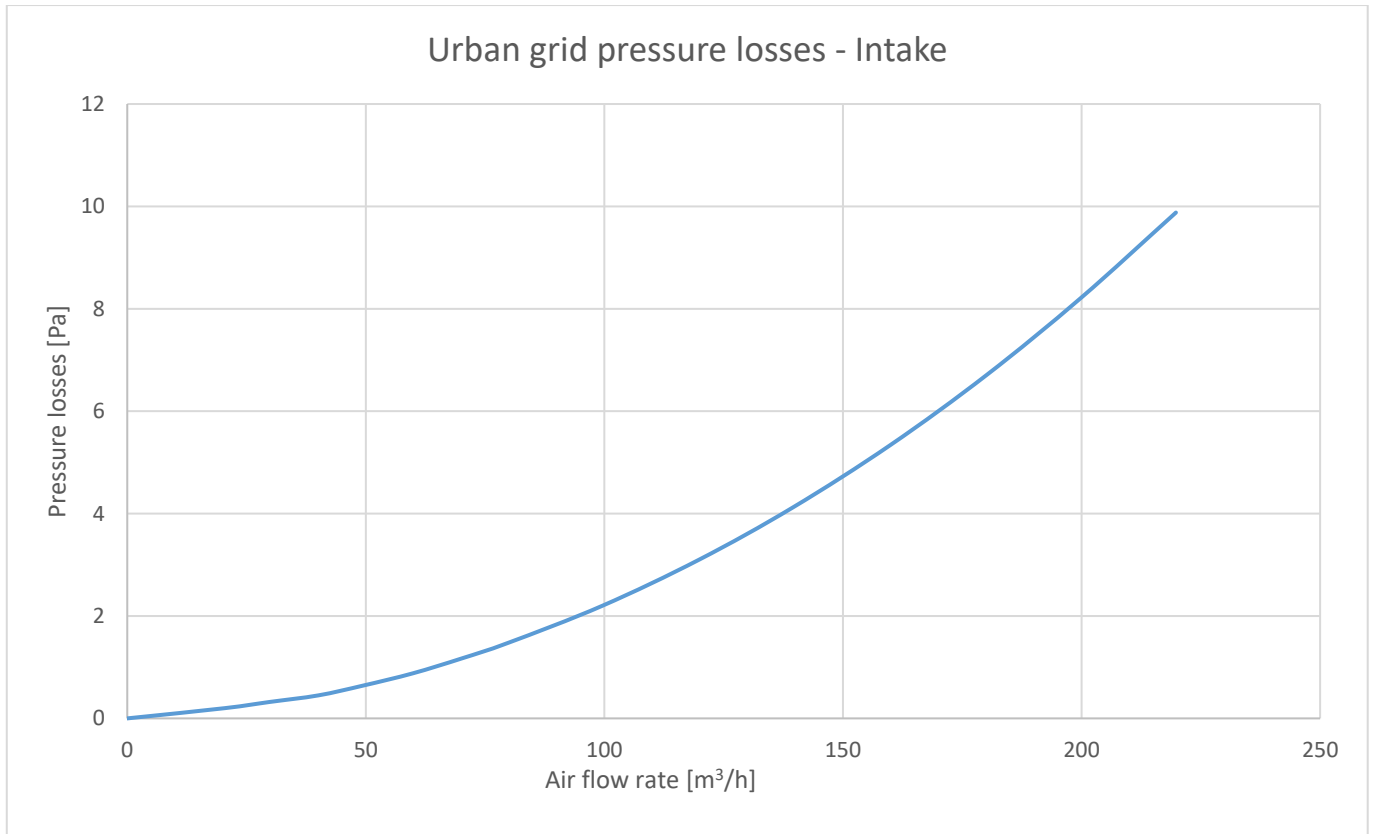
Characteristics	
Grid material	Painted steel AISI 316 stainless steel (feel versions)
Applications	Air intake / extraction inside the building
Positions	Wall / Ceiling (standard versions) Floor / wall (feel versions)
Finishing the grille	Matt white RAL 9016 (standard versions) Satin steel (feel versions)
Stock temperature	Min -30° C Max +60° C
Usage temperature	Min -5° C Max +60° C

Table: Pressure losses AriaSilent Urban



Air flow rate [m ³ /h]	Intake – Pressure losses [Pa]	Extraction – Pressure losses [Pa]
0	0	0
20	0,2	<0,4
30	0,32	<0,4
40	0,45	<0,4
49	0,64	0,52
60	0,88	0,75
70	1,17	1,02
80	1,48	1,34
100	2,2	2,09
120	3,1	2,97
140	4,12	3,98
160	5,34	5,09
180	6,71	6,33
200	8,21	7,67
220	9,88	9,06

Graph: Pressure losses AriaSilent Urban - Intake



Graph: Pressure losses AriaSilent Urban - Extraction

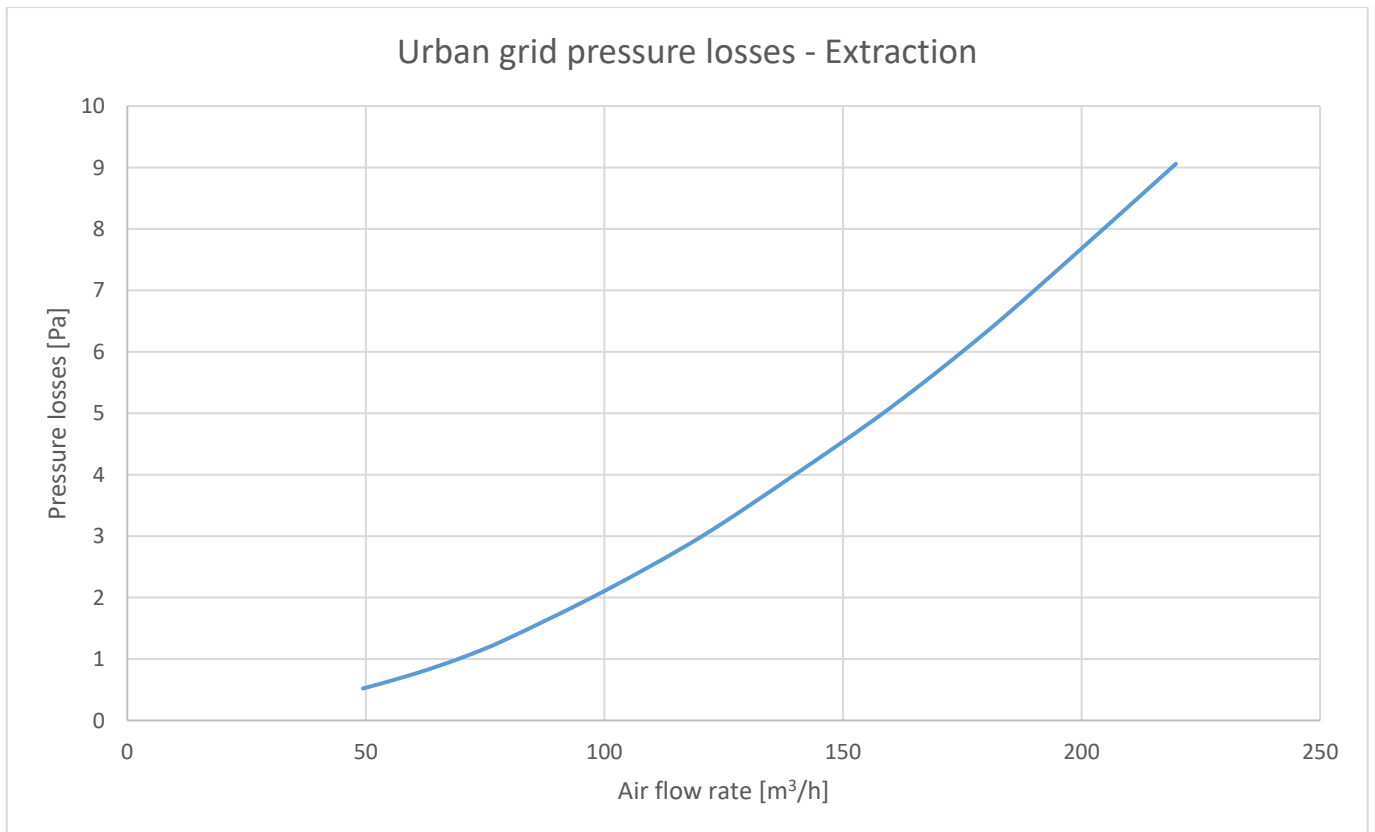
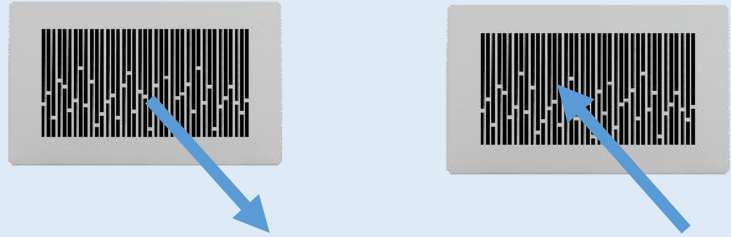
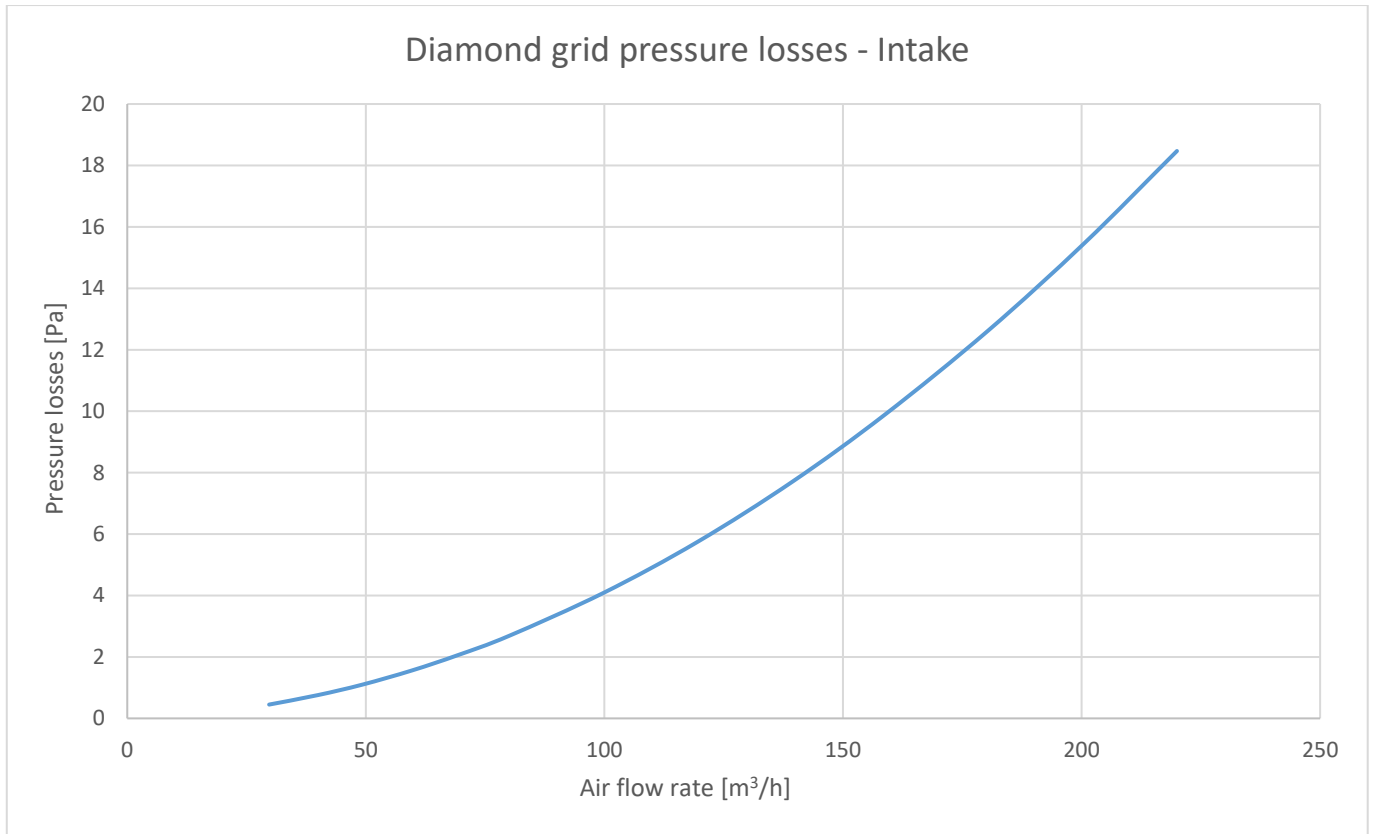


Table: Pressure losses AriaSilent Diamond



Air flow rate [m ³ /h]	Intake – Pressure losses [Pa]	Extraction – Pressure losses [Pa]
0	0	0
20	<0,4	<0,4
30	0,45	<0,4
40	0,76	0,66
49	1,1	0,96
60	1,56	1,29
69	2,06	1,64
80	2,69	2,05
100	4,09	2,99
120	5,75	4,06
140	7,72	5,34
159	9,89	6,77
180	12,62	8,4
201	15,48	10,26
220	18,47	12,27

Graph: Pressure losses AriaSilent Diamond - Intake



Graph: Pressure losses AriaSilent Diamond - Extraction

