

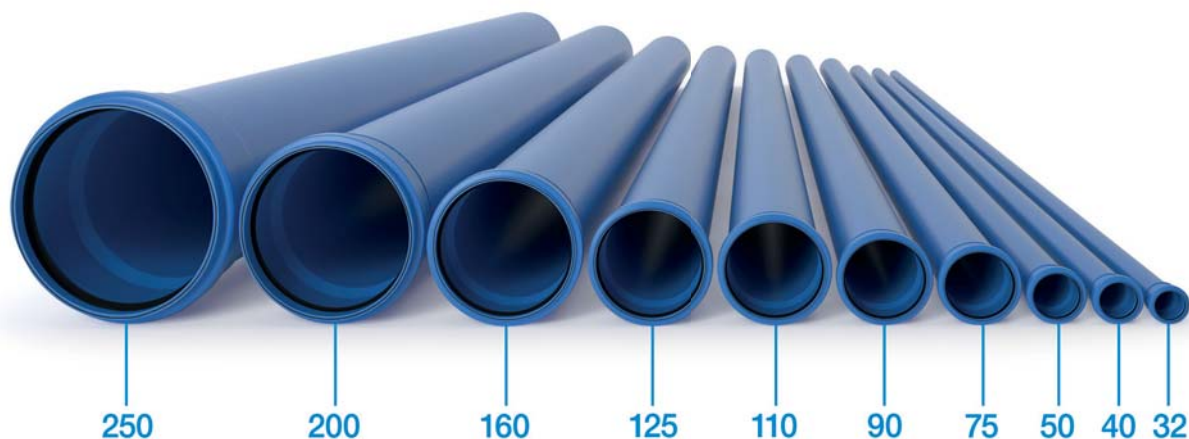
Triplus[®]: triple layer soundproof waste and drainage system inside the building

Triplus[®]: Odhlučňené třívrstvé potrubí pro odpadní systémy v budovách

TRIPLUS RANGE
SORTIMENT TRIPLUS

TRIPLUS®, THE EVOLUTION OF PUSH-FIT WASTE AND DRAINAGE SYSTEMS

TRIPLUS®, VÝVOJ KANALIZAČNÍHO POTRUBÍ SE ZÁSTRČKOVÝM PŘIHOJENÍM



The Triplus® pipes are in fact made up of three layers of material, which, when joined, result in a system with extremely good mechanical characteristics, even at low temperatures, and an excellent soundproofing performance.

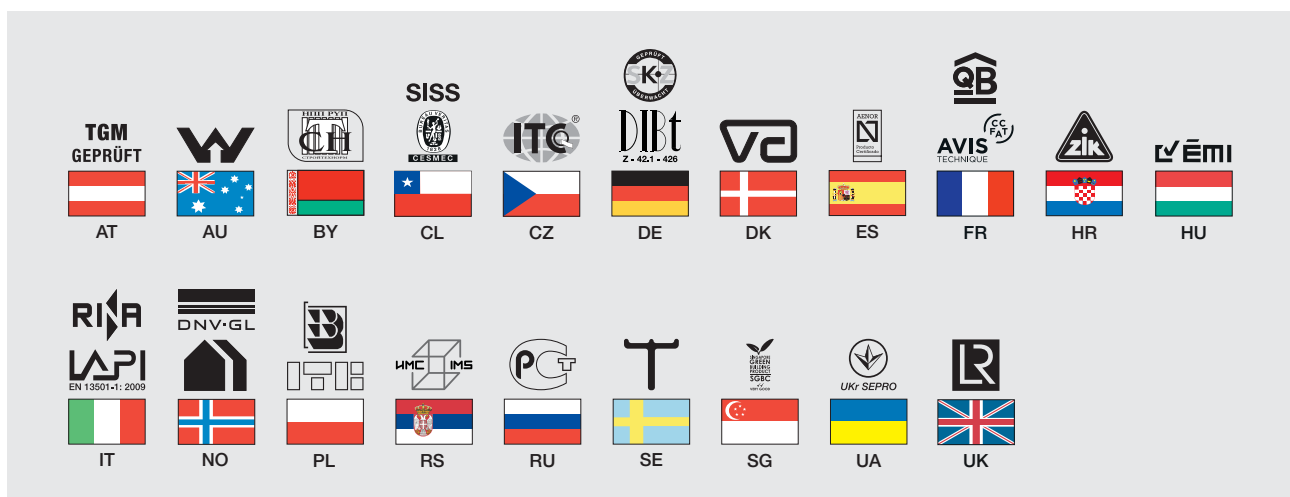
Triplus® is a push-fit system that includes triple layer pipes, fittings, and accessories, industrialized, produced, and patented by Valsir. Triplus systems guarantee the levels of low noise emissions of waste systems required by any current regulations, laws and standards.

Potrubi systém Triplus® se skládá ze tří vrstev materiálu, kterými lze dosáhnout zvýšené mechanické odolnosti i při nízkých teplotách a také vynikající zvukové izolace.

Triplus® je třívrstvý spojovací systém skládající se z trubek, tvarovek a příslušenství, vyráběný a patentovaný společností Valsir. Tento systém splňuje zákonné požadavky příslušných technických předpisů, pokud jde o zvukovou izolaci kanalizačního potrubí.



- Material offers a high impact resistance at low temperatures (as low as -25°C).
- This system guarantees high performance soundproofing. At a flow rate of 2 l/s noise levels of 12 dB(A) were measured, in compliance with EN 14366.
- Extremely simple and fast to install without the need for any special tools thanks to the push-fit connection.
- The pipes are supplied in various lengths with two sockets thus allowing reductions in left-over material.
- Resistance to intermittent discharges at temperatures as high as 95°C.
- High chemical resistance to substances dissolved in civil and industrial waste waters.
- Easily connected to other waste.
- Low coefficient of thermal expansion.
- The recyclability and production processes of this product are based on the Green Building Principles.
- Materiál, který se vyznačuje vysokou rázovou odolností při nízkých teplotách (až do -25 ° C).
- Vynikající zvuková izolace systému. Při průtoku 2 l / s byly měřeny hladiny zvuku 12 dB (A) podle EN 14366.
- Montáž se provádí snadno a rychle, bez použití speciálního vybavení a náradí.
- Trubky jsou k dispozici v různých délkách a s dvojitým hrdlem, a díky tomu nezůstávají na stavbě velké prořezy.
- Potrubní systém je krátkodobě odolný teplotám až 95° C.
- Vysoká chemická odolnost vůči látkám rozpuštěným v běžných a průmyslových odpadních vodách.
- Snadné připojení k jiným odvodňovacím systémům (litina, PP, PVC atd.).
- Nízký koeficient tepelné roztažnosti.
- Produkt, jeho recyklovatelnost a použité výrobní procesy jsou založeny na principech ekologických staveb.

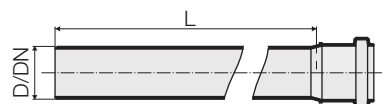



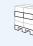


TRIPLUS RANGE





SORTIMENT TRIPLUS

HTEM Single socket pipe

HTEM – trubka s jednostranným hrdlem



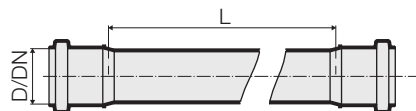
COD.	D	DN	L	kg				HxLxP 	CL	Kč/ks
VS0650001	32	30	150	0,039	30	240	1680	1130x800x1200	TP01	55,00
VS0650003	32	30	250	0,056	30	240	1680	1130x800x1200	TP01	72,00
VS0650005	32	30	500	0,098	30	180	900	1130x800x1200	TP01	98,00
VS0650007	32	30	1000	0,183	24	120	840	1200x1100x1200	TP01	154,00
VS0650009	32	30	1500	0,268	24	120	840	1200x1600x1200	TP01	235,00
VS0650011	32	30	2000	0,353	24	120	840	1200x2100x1200	TP01	284,00
VS0650013	32	30	3000	0,523	24	120	840	1200x3100x1200	TP01	430,00
VS0650021	40	40	150	0,064	30	240	1200	1030x800x1200	TP01	55,00
VS0650023	40	40	250	0,092	30	240	960	1010x800x1200	TP01	72,00
VS0650025	40	40	500	0,160	50	200	600	970x800x1200	TP01	98,00
VS0650027	40	40	1000	0,296	20	100	500	1075x1130x1220	TP01	154,00
VS0650029	40	40	1500	0,432	20	100	500	1075x1630x1220	TP01	236,00
VS0650031	40	40	2000	0,568	20	100	500	1075x2130x1220	TP01	284,00
VS0650033	40	40	3000	0,840	20	100	500	1075x3130x1220	TP01	459,00
VS0650041	50	50	150	0,083	30	240	960	1010x800x1200	TP01	63,00
VS0650043	50	50	250	0,119	30	240	720	1015x800x1200	TP01	75,00
VS0650045	50	50	500	0,208	35	140	420	970x800x1200	TP01	107,00
VS0650047	50	50	1000	0,385	30	120	360	1140x1130x1200	TP01	154,00
VS0650049	50	50	1500	0,563	30	120	360	1140x1630x1200	TP01	250,00
VS0650051	50	50	2000	0,740	30	120	360	1140x2130x1200	TP01	317,00
VS0650053	50	50	3000	1,095	30	120	360	1140x3130x1200	TP01	494,00
VS0650061	75	70	150	0,173	20	160	320	1050x800x1200	TP01	114,00
VS0650063	75	70	250	0,249	20	160	320	1050x800x1200	TP01	134,00
VS0650065	75	70	500	0,439	20	80	240	1075x800x1200	TP01	180,00
VS0650067	75	70	1000	0,819	20	60	180	1150x1150x1260	TP01	258,00
VS0650069	75	70	1500	1,199	20	60	180	1150x1650x1260	TP01	367,00
VS0650071	75	70	2000	1,579	20	60	180	1150x2150x1260	TP01	482,00
VS0650073	75	70	3000	2,339	20	60	180	1150x3150x1260	TP01	716,00
VS0650081	90	90	150	0,290	24	96	384	1050x800x1200	TP01	125,00
VS0650083	90	90	250	0,412	24	96	288	1165x800x1200	TP01	160,00
VS0650085	90	90	500	0,717	24	96	192	1300x800x1200	TP01	241,00
VS0650087	90	90	1000	1,327	10	-	120	1140x1150x1200	TP01	380,00
VS0650089	90	90	1500	1,937	10	-	120	1140x1650x1200	TP01	523,00
VS0650091	90	90	2000	2,547	10	-	120	1140x2150x1200	TP01	718,00
VS0650093	90	90	3000	3,767	10	-	120	1140x3150x1200	TP01	1040,00
VS0650101	110	100	150	0,392	15	60	240	1050x800x1200	TP01	145,00
VS0650103	110	100	250	0,556	15	60	180	1165x800x1200	TP01	176,00
VS0650105	110	100	500	0,967	15	60	120	1300x800x1200	TP01	270,00
VS0650107	110	100	1000	1,789	15	30	90	1210x1180x1200	TP01	422,00
VS0650109	110	100	1500	2,611	15	30	90	1210x1680x1200	TP01	590,00

COD.	D	DN	L	kg				HxLxP 	CL	Kč/ks
VS0650111	110	100	2000	3,433	15	30	90	1210x2180x1200	TP01	795,00
VS0650113	110	100	3000	5,077	15	30	90	1210x3180x1200	TP01	1153,00
VS0650121	125	125	150	0,520	10	80	160	1050x800x1200	TP01	204,00
VS0650123	125	125	250	0,732	10	40	120	1039x800x1200	TP01	262,00
VS0650125	125	125	500	1,263	6	48	96	1340x800x1200	TP01	378,00
VS0650127	125	125	1000	2,324	8	16	64	1200x1170x1200	TP01	613,00
VS0650129	125	125	1500	3,385	8	16	64	1200x1670x1200	TP01	837,00
VS0650131	125	125	2000	4,446	8	16	64	1200x2170x1200	TP01	1129,00
VS0650133	125	125	3000	6,568	8	16	64	1200x3170x1200	TP01	1598,00
VS0650141	160	150	150	0,908	1	-	84	950x800x1200	TP01	319,00
VS0650143	160	150	250	1,266	1	-	56	950x800x1200	TP01	386,00
VS0650145	160	150	500	2,161	1	-	36	950x800x1200	TP01	590,00
VS0650147	160	150	1000	3,951	6	12	36	1180x1190x1200	TP01	916,00
VS0650149	160	150	1500	5,741	6	12	36	1180x1690x1200	TP01	1264,00
VS0650151	160	150	2000	7,531	6	12	36	1180x2190x1200	TP01	1701,00
VS0650153	160	150	3000	11,111	6	12	36	1180x3190x1200	TP01	2441,00
VS0650167	200	200	1000	6,099	4	-	-	445x1250x465	TP01	2209,00
VS0650171	200	200	2000	11,359	4	-	-	445x2250x465	TP01	3912,00
VS0650173	200	200	3000	16,619	4	-	-	445x3250x465	TP01	5514,00
VS0650187	250	250	1000	9,905	4	-	-	545x1300x565	TP01	3723,00
VS0650193	250	250	3000	26,623	4	-	-	545x3300x565	TP01	9277,00

TRIPLUS RANGE
SORTIMENT TRIPLUS

**HTEM Double socket
pipe**

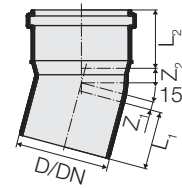
HTEM – trubka
s oboustranným hrdlem



COD.	D	DN	L	kg				HxLxP	CL	Kč/ks
VS0650205	32	30	500	0,111	30	180	720	1020x800x1200	TP01	139,00
VS0650207	32	30	1000	0,196	24	120	840	1200x1200x1200	TP01	197,00
VS0650209	32	30	1500	0,281	24	120	840	1200x1700x1200	TP01	282,00
VS0650211	32	30	2000	0,366	24	120	840	1200x2200x1200	TP01	342,00
VS0650213	32	30	3000	0,536	24	120	840	1200x3200x1200	TP01	502,00
VS0650225	40	40	500	0,183	35	140	420	925x800x1200	TP01	139,00
VS0650227	40	40	1000	0,319	20	100	500	1075x1180x1220	TP01	197,00
VS0650229	40	40	1500	0,455	20	100	500	1075x1680x1220	TP01	282,00
VS0650231	40	40	2000	0,591	20	100	500	1075x2180x1220	TP01	342,00
VS0650233	40	40	3000	0,863	20	100	500	1075x3180x1220	TP01	553,00
VS0650245	50	50	500	0,238	25	100	300	925x800x1200	TP01	158,00
VS0650247	50	50	1000	0,415	30	120	360	1150x1180x1200	TP01	215,00
VS0650249	50	50	1500	0,593	30	120	360	1150x1680x1200	TP01	300,00
VS0650251	50	50	2000	0,770	30	120	360	1150x2180x1200	TP01	380,00
VS0650253	50	50	3000	1,125	30	120	360	1150x3180x1200	TP01	594,00
VS0650265	75	70	500	0,499	12	96	288	1390x800x1200	TP01	210,00
VS0650267	75	70	1000	0,879	10	30	180	1150x1180x1260	TP01	319,00
VS0650269	75	70	1500	1,259	10	30	180	1150x1680x1260	TP01	437,00
VS0650271	75	70	2000	1,639	10	30	180	1150x2180x1260	TP01	571,00
VS0650273	75	70	3000	2,399	10	30	180	1150x3180x1260	TP01	851,00
VS0650285	90	90	500	0,823	8	80	240	2065x800x1200	TP01	270,00
VS0650287	90	90	1000	1,433	10	-	120	1140x1190x1200	TP01	431,00
VS0650289	90	90	1500	2,043	10	-	120	1140x1690x1200	TP01	590,00
VS0650291	90	90	2000	2,653	10	-	120	1140x2190x1200	TP01	861,00
VS0650293	90	90	3000	3,873	10	-	120	1140x3190x1200	TP01	1249,00
VS0650305	110	100	500	1,113	12	48	96	1420x800x1200	TP01	352,00
VS0650307	110	100	1000	1,935	10	20	80	1100x1230x1200	TP01	535,00
VS0650309	110	100	1500	2,757	10	20	80	1100x1730x1200	TP01	707,00
VS0650311	110	100	2000	3,579	10	20	80	1100x2230x1200	TP01	955,00
VS0650313	110	100	3000	5,223	10	20	80	1100x3230x1200	TP01	1386,00
VS0650325	125	125	500	1,465	6	36	72	1480x800x1200	TP01	515,00
VS0650327	125	125	1000	2,526	8	16	64	1200x1230x1200	TP01	758,00
VS0650329	125	125	1500	3,587	8	16	64	1200x1730x1200	TP01	997,00
VS0650331	125	125	2000	4,648	8	16	64	1200x2230x1200	TP01	1357,00
VS0650333	125	125	3000	6,770	8	16	64	1200x3230x1200	TP01	1889,00

HTB 15° bend

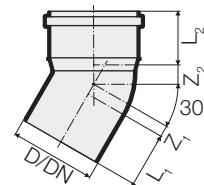
HTB koleno 15°



COD.	D	DN	Z ₁	L ₁	Z ₂	L ₂	kg				HxLxP	CL	Kč/ks
VS0650401	32	30	3	48	6	44	0,021	80	640	4480	1000x800x1200	TP02	60,00
VS0650411	40	40	4	47	8	44	0,043	50	400	2000	1030x800x1200	TP02	63,00
VS0650421	50	50	4	48	8	46	0,057	30	240	1680	1110x800x1200	TP02	82,00
VS0650431	75	70	7	53	11	52	0,134	20	160	640	1010x800x1200	TP02	130,00
VS0650441	90	90	8	56	14	56	0,192	20	160	480	1015x800x1200	TP02	176,00
VS0650451	110	100	9	61	16	59	0,288	20	80	240	970x800x1200	TP02	197,00
VS0650461	125	125	10	66	17	64	0,419	20	80	160	940x800x1200	TP02	367,00
VS0650471	160	150	-	82	18	77	0,778	1	-	100	930x800x1200	TP02	574,00

HTB 30° bend

HTB koleno 30°

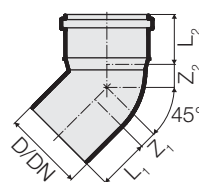


COD.	D	DN	Z ₁	L ₁	Z ₂	L ₂	kg				HxLxP	CL	Kč/ks
VS0650403	32	30	5	48	8	44	0,021	80	640	4480	1000x800x1200	TP02	60,00
VS0650413	40	40	7	47	10	44	0,046	50	400	2000	1030x800x1200	TP02	63,00
VS0650423	50	50	8	48	12	46	0,060	30	240	1680	1110x800x1200	TP02	82,00
VS0650433	75	70	12	53	17	52	0,145	20	160	640	1010x800x1200	TP02	130,00
VS0650443	90	90	14	56	20	56	0,205	20	80	320	1080x800x1200	TP02	176,00
VS0650453	110	100	17	61	23	59	0,312	20	80	240	970x800x1200	TP02	197,00
VS0650463	125	125	18	66	26	64	0,452	20	80	160	940x800x1200	TP02	367,00
VS0650473	160	150	-	82	29	77	0,831	1	-	90	930x800x1200	TP02	574,00

TRIPLUS RANGE
SORTIMENT TRIPLUS

HTB 45° bend

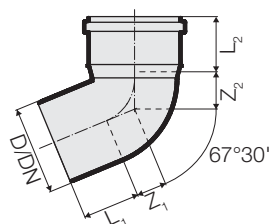
HTB koleno 45°



COD.	D	DN	Z ₁	L ₁	Z ₂	L ₂	kg				HxLxP	CL	Kč/ks
VS0650405	32	30	8	45	10	44	0,022	80	640	3200	1000x800x1200	TP02	60,00
VS0650415	40	40	10	47	14	44	0,048	50	400	2000	1030x800x1200	TP02	60,00
VS0650425	50	50	11	48	17	46	0,062	30	240	1200	1030x800x1200	TP02	75,00
VS0650435	75	70	18	53	22	52	0,145	20	160	480	1015x800x1200	TP02	130,00
VS0650445	90	90	21	56	26	56	0,221	20	80	320	1080x800x1200	TP02	176,00
VS0650455	110	100	25	61	31	59	0,330	20	80	240	1039x800x1200	TP02	184,00
VS0650465	125	125	28	66	35	64	0,496	15	60	120	940x800x1200	TP02	367,00
VS0650475	160	150	-	82	41	77	0,937	1	-	80	930x800x1200	TP02	574,00
VS0650485	200	200	42	115	57	114	1,946	1	-	35	930x800x1200	TP02	3537,00
VS0650495	250	250	52	155	86	138	3,995	1	-	14	930x800x1200	TP02	6374,00

HTB 67°30' bend

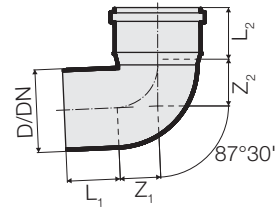
HTB koleno 67°30'



COD.	D	DN	Z ₁	L ₁	Z ₂	L ₂	kg				HxLxP	CL	Kč/ks
VS0650407	32	30	10	51	15	47	0,021	60	480	3360	1000x800x1200	TP02	63,00
VS0650417	40	40	15	47	19	44	0,051	50	400	2000	1030x800x1200	TP02	68,00
VS0650427	50	50	18	48	22	46	0,068	30	240	1200	1030x800x1200	TP02	102,00
VS0650437	75	70	28	53	33	52	0,166	20	160	480	1015x800x1200	TP02	168,00
VS0650447	90	90	33	56	38	56	0,258	20	80	320	1080x800x1200	TP02	196,00
VS0650457	110	100	40	61	45	59	0,373	20	80	160	940x800x1200	TP02	207,00
VS0650467	125	125	43	66	51	64	0,539	15	60	120	940x800x1200	TP02	538,00

HTB 87°30' bend

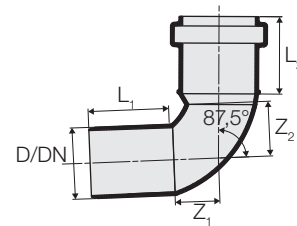
HTB koleno 87°30'



COD.	D	DN	Z ₁	L ₁	Z ₂	L ₂	kg				HxLxP	CL	Kč/ks
VS0650409	32	30	20	45	19	44	0,024	60	480	3360	1000x800x1200	TP02	63,00
VS0650419	40	40	22	47	25	44	0,054	50	400	2000	1030x800x1200	TP02	63,00
VS0650429	50	50	26	48	30	46	0,072	30	240	1200	1030x800x1200	TP02	83,00
VS0650439	75	70	40	53	43	52	0,177	20	160	480	1015x800x1200	TP02	168,00
VS0650449	90	90	46	56	51	56	0,265	20	80	320	1080x800x1200	TP02	186,00
VS0650459	110	100	57	61	61	59	0,409	20	80	160	940x800x1200	TP02	197,00
VS0650469	125	125	62	66	70	64	0,600	10	40	120	1039x800x1200	TP02	538,00
VS0650479	160	150	-	82	85	77	1,143	1	-	65	930x800x1200	TP02	888,00
VS0650489	200	200	96	115	110	115	2,370	1	-	30	930x800x1200	TP02	4126,00
VS0650499	250	250	120	155	140	152	4,812	1	-	14	930x800x1200	TP02	7029,00

Long radius bend 87°30'

Dlouhé koleno 87°30'

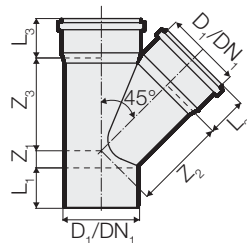


COD.	D	DN	Z ₁	L ₁	Z ₂	L ₂	kg				HxLxP	CL	Kč/ks
VS0652901	40	40	25	45	30	43	0,057	50	400	2000	930x800x1200	TP02	65,00
VS0652902	50	50	31	46	37	45	0,079	30	240	1200	930x800x1200	TP02	84,00
VS0652903	75	70	48	56	54	52	0,187	15	180	360	930x800x1200	TP02	171,00
VS0652904	90	90	57	56	64	56	0,253	20	80	240	930x800x1200	TP02	191,00
VS0652905	110	100	69	64	78	59	0,434	20	80	160	930x800x1200	TP02	198,00

TRIPLUS RANGE
SORTIMENT TRIPLUS

HTEA 45° branch

HTEA odbočka 45°

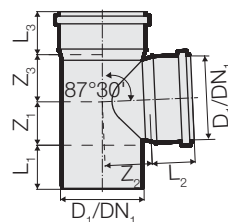


COD.	D ₁	DN ₁	Z ₁	L ₁	Z ₂	L ₂	Z ₃	L ₃	kg				HxLxP	CL	Kč/ks
VS0650501	32	32	7	50	44	44	44	44	0,041	40	320	1600	1000x800x1200	TP02	130,00
VS0650507	40	40	10	46	49	44	49	44	0,090	20	160	1120	1110x800x1200	TP02	138,00
VS0650513	50	50	12	50	61	46	61	46	0,122	20	160	640	1010x800x1200	TP02	164,00
VS0650519	75	70	19	53	96	52	96	52	0,303	20	80	240	970x800x1200	TP02	227,00
VS0650525	90	90	21	56	110	56	110	56	0,474	20	80	160	940x800x1200	TP02	342,00
VS0650531	110	100	25	61	135	59	135	59	0,718	10	40	80	940x800x1200	TP02	383,00
VS0650537	125	125	28	66	152	65	152	65	1,057	5	20	60	1039x800x1200	TP02	1323,00
VS0650543	160	150	-	82	194	77	195	77	2,000	1	-	32	930x800x1200	TP02	2064,00
VS0650669 *	200	200	42	195	275	133	275	133	5,305	1	-	10	930x800x1200	TP02	6113,00
VS0650685 *	250	250	52	180	333	163	333	162	9,511	1	-	7	930x800x1200	TP02	10695,00

* Welded. - Abzweiger angeschweißt.

HTEA 87°30' branch

HTEA T-kus 87°30'

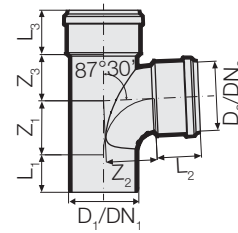


COD.	D ₁	DN ₁	Z ₁	L ₁	Z ₂	L ₂	Z ₃	L ₃	kg				HxLxP	CL	Kč/ks
VS0650505	32	32	21	45	17	52	17	52	0,037	40	320	1600	1000x800x1200	TP02	130,00
VS0650511	40	40	19	46	24	44	28	44	0,082	20	160	1120	1110x800x1200	TP02	138,00
VS0650517	50	50	28	50	29	46	29	46	0,109	20	160	800	1030x800x1200	TP02	164,00
VS0650523	75	70	39	53	46	52	46	52	0,258	20	80	240	853x800x1200	TP02	227,00
VS0650529	90	90	48	56	52	56	52	56	0,432	20	80	160	940x800x1200	TP02	342,00
VS0650535	110	100	56	61	65	59	65	59	0,583	10	40	120	970x800x1200	TP02	383,00
VS0650541	125	125	65	66	71	65	71	65	0,856	10	40	80	940x800x1200	TP02	1323,00
VS0650547	160	150	-	82	89	78	93	77	1,576	1	-	40	930x800x1200	TP02	2064,00
VS0650671 *	200	200	95	150	134	136	134	136	4,318	1	-	15	930x800x1200	TP02	6504,00
VS0650687 *	250	250	130	170	165	160	165	160	7,620	1	-	6	930x800x1200	TP02	10827,00

* Welded. - Svařované.

87°30' sweep branch

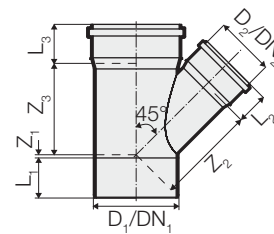
T-kus s náběhem 87°30'



COD.	D ₁ /D ₂	DN ₁ /DN ₂	Z ₁	L ₁	Z ₂	L ₂	Z ₃	L ₃	kg				HxLxP	CL	Kč/ks
VS0650694	90/90	90/90	57	56	64	56	47	59	0,445	20	80	160	955x800x1200	TP02	397,00
VS0650695	110/75	100/70	48	81	54	52	58	59	0,544	10	60	120	955x800x1200	TP02	397,00
VS0650696	110/90	100/90	57	72	64	56	58	59	0,587	10	40	120	955x800x1200	TP02	415,00
VS0650693	110/110	100/100	69	64	78	66	58	59	0,641	8	32	96	970x800x1200	TP02	704,00

HTEA 45° reducing branch

HTEA odbočka 45°
redukční



COD.	D ₁ /D ₂	DN ₁ /DN ₂	Z ₁	L ₁	Z ₂	L ₂	Z ₃	L ₃	kg				HxLxP	CL	Kč/ks
VS0650551	40/32	40/30	5	52	45	47	42	52	0,051	40	320	1280	1000x800x1200	TP02	138,00
VS0650557	50/40	50/40	5	50	56	44	54	46	0,104	20	160	800	1030x800x1200	TP02	164,00
VS0650563	75/40	70/40	-7	46	79	44	71	52	0,287	25	100	300	853x800x1200	TP02	227,00
VS0650569	75/50	70/50	-1	54	84	46	76	54	0,216	25	100	300	970x800x1200	TP02	227,00
VS0650575	90/40	90/40	-10	56	87	44	76	56	0,278	20	80	240	970x800x1200	TP02	342,00
VS0650581	90/50	90/50	-9	56	90	46	83	56	0,295	20	80	240	970x800x1200	TP02	342,00
VS0650587	110/40	100/40	-24	61	99	44	89	59	0,371	20	80	160	940x800x1200	TP02	383,00
VS0650593	110/50	100/50	-17	61	106	46	79	59	0,410	20	80	160	940x800x1200	TP02	383,00
VS0650599	110/75	100/70	1	61	121	52	112	59	0,519	15	60	120	940x800x1200	TP02	383,00
VS0650689 ♦	110/90	100/90	25	61	162	60	135	59	0,843	10	40	80	930x800x1200	TP02	431,00
VS0650605	125/50	125/50	-24	66	114	46	111	65	0,575	10	40	120	853x800x1200	TP02	872,00
VS0650611	125/110	125/100	18	66	146	59	142	65	0,911	8	32	64	940x800x1200	TP02	872,00
VS0650617	160/110	150/100	-	82	-	-	167	77	1,416	1	-	40	930x800x1200	TP02	1374,00
VS0650623	160/125	150/125	-	82	-	-	170	77	1,542	1	-	40	930x800x1200	TP02	1374,00
VS0650629 *	200/110	200/100	-20	150	227	64	205	136	2,840	1	-	20	930x800x1200	TP02	4148,00
VS0650633 *	200/125	200/125	-13	151	236	75	219	134	3,124	1	-	20	930x800x1200	TP02	4279,00
VS0650637 *	200/160	200/160	14	150	257	75	244	134	3,709	1	-	18	930x800x1200	TP02	4409,00
VS0650643 *	250/110	250/100	-47	180	262	64	235	162	5,060	1	-	10	930x800x1200	TP02	5806,00
VS0650647 *	250/160	250/150	-12	180	308	78	251	162	6,000	1	-	10	930x800x1200	TP02	6461,00
VS0650650 *	250/200	250/200	16	180	307	135	300	162	7,396	1	-	8	930x800x1200	TP02	8861,00

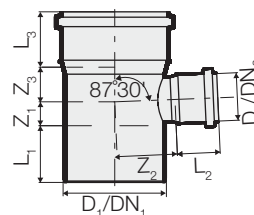
* Welded. - Svařované.

♦ Simple branch with reduced grafted on the derivation. - Jednoduchá větev se sníženým roubováním na derivaci.

TRIPLUS RANGE
SORTIMENT TRIPLUS

HTEA 87°30' reducing branch

HTEA T-kus 87°30'
redukční



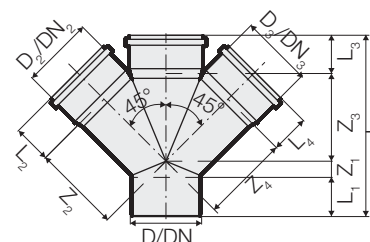
COD.	D ₁ /D ₂	DN ₁ /DN ₂	Z ₁	L ₁	Z ₂	L ₂	Z ₃	L ₃	kg				HxLxP	CL	Kč/ks
VS0650555	40/32	40/30	18	52	23	50	20	50	0,048	40	320	1280	1000x800x1200	TP02	138,00
VS0650561	50/40	50/40	23	50	29	44	24	46	0,099	25	200	800	1010x800x1200	TP02	164,00
VS0650567	75/40	70/40	22	53	47	44	30	52	0,191	25	100	300	853x800x1200	TP02	227,00
VS0650573	75/50	70/50	27	53	46	46	35	52	0,199	25	100	300	853x800x1200	TP02	227,00
VS0650579	90/40	90/40	23	56	50	44	29	56	0,264	15	60	240	860x800x1200	TP02	342,00
VS0650585	90/50	90/50	24	56	50	46	34	56	0,275	20	80	240	853x800x1200	TP02	342,00
VS0650591	110/40	100/40	21	61	62	44	32	59	0,350	20	80	240	1039x800x1200	TP02	383,00
VS0650597	110/50	100/50	26	61	64	46	37	59	0,374	20	80	240	1039x800x1200	TP02	383,00
VS0650603	110/75	100/70	38	61	67	52	49	59	0,445	15	60	120	940x800x1200	TP02	383,00
VS0650691 ♦	110/90	100/90	56	61	90	60	65	59	0,705	10	40	120	930x800x1200	TP02	431,00
VS0650609	125/50	125/50	28	66	68	46	36	65	0,719	10	40	120	853x800x1200	TP02	872,00
VS0650615	125/110	125/100	58	66	72	59	64	65	0,751	8	32	96	1039x800x1200	TP02	872,00
VS0650621	160/110	150/100	-	82	-	-	67	77	1,207	1	-	65	930x800x1200	TP02	1374,00
VS0650627	160/125	150/125	-	82	-	-	75	77	1,427	1	-	65	930x800x1200	TP02	1374,00
VS0650631 *	200/110	200/100	50	150	134	64	101	134	2,873	1	-	20	930x800x1200	TP02	4452,00
VS0650635 *	200/125	200/125	57	150	135	75	99	134	2,764	1	-	18	930x800x1200	TP02	4628,00
VS0650639 *	200/160	200/150	118	150	138	76	116	134	3,205	1	-	20	930x800x1200	TP02	4802,00
VS0650645 *	250/110	250/100	70	180	145	64	77	162	4,632	1	-	10	930x800x1200	TP02	6680,00
VS0650649 *	250/160	250/150	74	180	174	78	118	162	6,091	1	-	10	930x800x1200	TP02	7335,00
VS0650651 *	250/200	250/200	95	180	160	135	138	162	6,150	1	-	8	930x800x1200	TP02	9604,00

* Welded. - Svařované.

♦ Simple branch with reduced grafted on the derivation. - Jednoduchá větev se sníženým roubováním na derivaci.

HTDA Double branch 45°

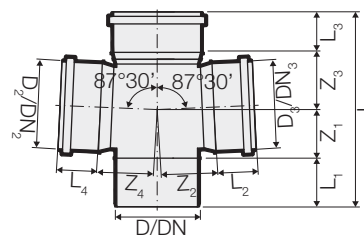
HTDA Dvojodbočka



COD.	D _{1/2/3}	DN _{1/2/3}	L	Z ₁	L ₁	Z _{2/3/4}	L _{2/3/4}	kg				HxLxP	CL	Kč/ks
VS0650655	110/110/110	100/100/100	280	25	61	136	59	0,902	5	20	60	1010x800x1200	TP02	764,00

HTDA Double branch 87°30'

HTDA Kříž 87°30'

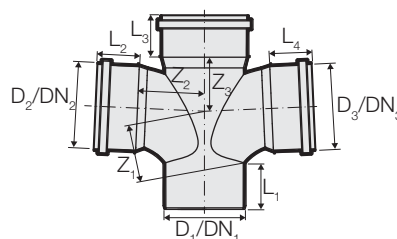


COD.	D _{1/2/3}	DN _{1/2/3}	L	Z ₁	L ₁	Z _{2/4}	L _{2/4}	Z ₃	L ₃	kg				HxLxP	CL	Kč/ks
VS0650654	110/50/50	100/50/50	181,5	25	60	63	44	42,5	54	0,399	5	40	120	1000x800x1200	TP02	1526,00
VS0650656	110/110/110	100/100/100	249	64	60	72	52	73	52	0,728	5	20	60	1000x800x1200	TP02	1526,00
VS0650659 *	125/110/110	125/100/100	252	59	65	79	52	72	56	0,897	5	20	60	1010x800x1200	TP02	3337,00
VS0650667 *	160/110/110	150/100/100	289	61	84	100	52	81	63	1,295	1	-	45	800x800x1200	TP02	5957,00

* Welded. - Svařované.

Double swept branch 87°30'

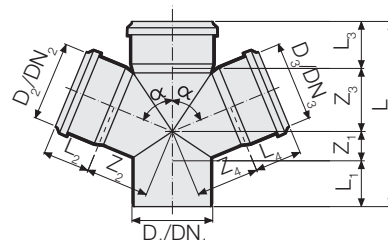
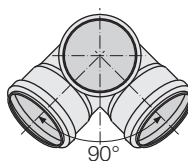
Kříž redukční 87°30'



COD.	D _{1/2/3}	DN _{1/2/3}	Z ₁	L ₁	Z ₂	L ₂	Z ₃	L ₃	L ₄	kg				HxLxP	CL	Kč/ks
VS0652910	90/90/75	90/90/70	57	56	64	56	47	56	53	0,531	15	60	120	955x800x1200	TP02	1274,00
VS0652911	90/90/90	90/90/90	57	56	64	56	47	56	56	0,531	12	48	96	955x800x1200	TP02	1274,00
VS0652912	110/110/75	100/100/70	69	64	78	66	58	59	52	0,649	5	30	60	955x800x1200	TP02	1415,00
VS0652913	110/110/90	100/100/90	69	64	78	66	58	59	56	0,684	5	30	60	955x800x1200	TP02	1467,00
VS0652914	110/110/110	100/100/100	69	64	78	66	58	59	59	0,806	5	-	60	955x800x1200	TP02	1526,00

HTED Corner branch 87°30'

HTED Rohová odbočka
87°30'



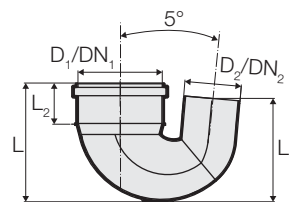
COD.	D _{1/2/3}	DN _{1/2/3}	Z ₁	Z _{2/4}	Z ₃	L	L ₁	L _{2/4}	L ₃	kg				HxLxP	CL	Kč/ks
VS0650657	110/110/110	100/100/100	54	77	71	242	63	54	54	0,727	5	20	60	955x800x1200	TP02	1598,00
VS0650661	125/110/110	125/100/100	54	77	71	255	71	54	59	0,892	5	20	60	1010x800x1200	TP02	1866,00
VS0650662 *	160/110/110	150/100/100	68	100	77	290	78	52	67	1,297	1	-	50	800x800x1200	TP02	5957,00

* Welded. - Svařované.

TRIPLUS RANGE
SORTIMENT TRIPLUS

Socketed bend for P trap

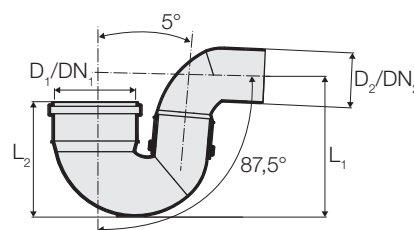
Sifonové koleno „U“



COD.	D ₁ /D ₂	DN ₁ /DN ₂	L	L ₁	L ₂	kg			HxLxP	CL	Kč/ks
VS0652200	110/75	100/70	157	137	55	0,441	5	120	930x800x1200	TP02	745,00

P trap with 1 inlet

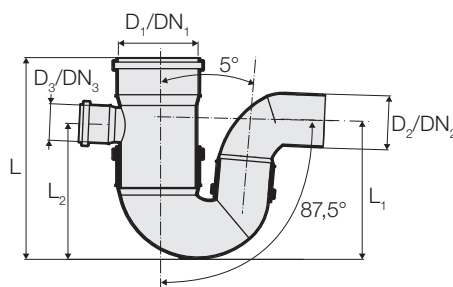
Sifonové koleno „S“



COD.	D ₁ /D ₂	DN ₁ /DN ₂	L ₁	L ₂	kg			HxLxP	CL	Kč/ks
VS0652203	110/75	100/70	192	157	0,628	1	80	930x800x1200	TP02	914,00

P trap with 2 inlets

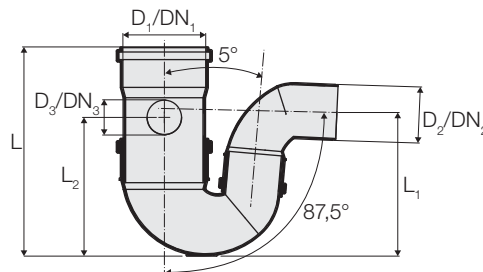
Sifonové koleno s odbočkou „S“



COD.	D ₁ /D ₂ /D ₃	DN ₁ /DN ₂ /DN ₃	L	L ₁	L ₂	kg			HxLxP	CL	Kč/ks
VS0652201	110/75/50	100/70/50	280	192	189	1,005	1	48	930x800x1200	TP02	1295,00

P trap with 3 inlets

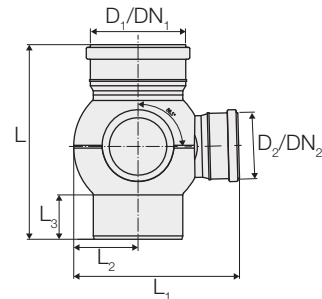
Sifonové koleno s dvojodbočkou „S“



COD.	D ₁ /D ₂ /D ₃	DN ₁ /DN ₂ /DN ₃	L	L ₁	L ₂	kg			HxLxP	CL	Kč/ks
VS0652202	110/75/50	100/70/50	280	192	185	1,024	1	48	930x800x1200	TP02	2440,00

90° 2-way ball branch

2-cestná kulová odbočka

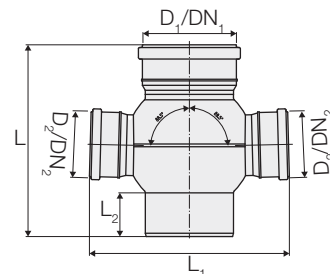


COD.	D ₁ /D ₂	DN ₁ /DN ₂	L	L ₁	L ₂	L ₃	kg			HxLxP	CL	Kč/ks
VS0652105	110/110	100/100	269	226	85	62	0,950	5	80	1090x800x1200	TP02	3136,00
VS0652110	125/110	125/100	299	251	95	68	1,100	5	60	1090x800x1200	TP02	3365,00
VS0652116	160/110	150/100	348	296	115	79	2,035	1	35	1090x800x1200	TP02	6100,00

Welded. - Svařované.

180° 2-way ball branch

2-cestná kulová odbočka

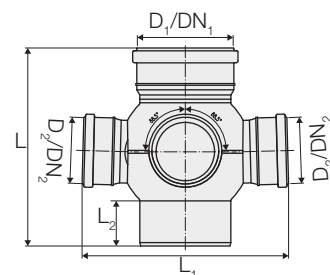


COD.	D ₁ /D ₂	DN ₁ /DN ₂	L	L ₁	L ₂	kg			HxLxP	CL	Kč/ks
VS0652165	110/110	100/100	269	283	62	0,957	5	80	1090x800x1200	TP02	3136,00
VS0652170	125/110	125/100	299	313	68	1,080	5	60	1090x800x1200	TP02	3365,00
VS0652176	160/110	150/100	348	363	79	2,040	1	35	1090x800x1200	TP02	6100,00

Welded. - Svařované.

90° 4-way ball branch

4-cestná kulová odbočka



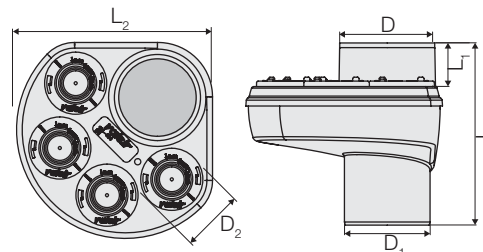
COD.	D ₁ /D ₂	DN ₁ /DN ₂	L	L ₁	L ₂	kg				HxLxP	CL	Kč/ks
VS0652265	110/110	100/100	269	283	62	1,110	5	20	40	1090x800x1200	TP02	4445,00
VS0652270	125/110	125/100	299	313	68	1,360	5	20	40	1090x800x1200	TP02	4610,00
VS0652276	160/110	150/100	348	363	79	2,280	1	-	35	1090x800x1200	TP02	8056,00

Welded. - Svařované.

TRIPLUS RANGE
SORTIMENT TRIPLUS

Triplus Multibranch

Multi vstup



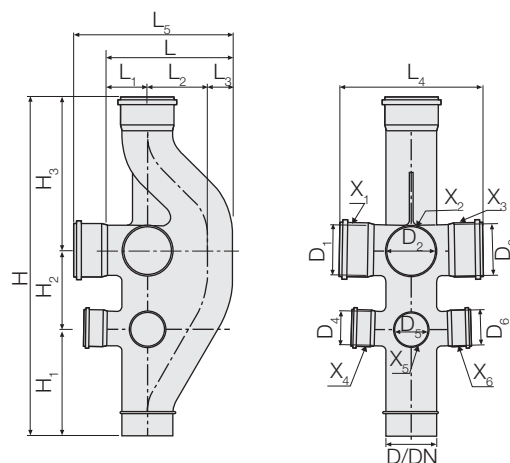
COD.	D	D ₁	D ₂	L	L ₁	L ₂	kg				HxLxP	CL	Kč/ks
VS0652001	110	110	4x32-50	230	55	250	1,342	2	16	48	1015x800x1200	TP02	2830,00

Welded. - Svařované.

VBF

Ventilation branch

Odvětrávací odbočka



COD.	D	DN	D _{1/2/3}	D _{4/5/6}	L	L ₁	L ₂	L ₃	L ₄	L ₅	H	H ₁	H ₂	H ₃	CL	Kč/ks
VS0651X ₁ X ₂ X ₃ X ₄ X ₅ X ₆ *	110	100	110	75	265	85	130	50	300	345	780	245	170	365	TP02	**
VS0654X ₁ X ₂ X ₃ X ₄ X ₅ X ₆ *	160	150	110	75	300	100	145	55	340	380	880	310	170	400	TP02	**

* X=0 if the inlet has no socket, X=1 if the socket is welded to the inlet. - X přijímá hodnotu 0 pro vstup bez soketu, X přijímá hodnotu 1 pro vstup se soketem.

A minimum quantity per order is foreseen. Delivery date to be agreed. - Požadavek na minimální množství objednávky. Termín dodání na vyžádání.

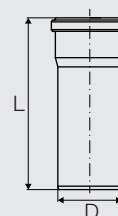
Welded. - Svařované.

** On request. - Na dotaz

Accessories - Příslušenství

Welding socket for VBF ventilation branch

Svařovací objímka pro smíšené tvarovky VBF

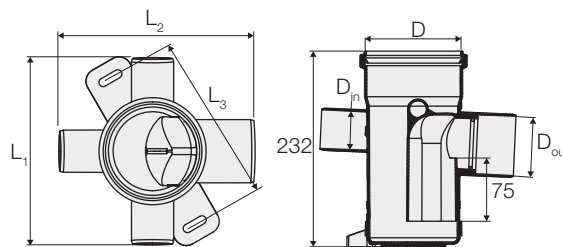


COD.	D	L	kg		CL	Kč/ks
VS0652884	75	202	0,186	15	TP01	198,00
VS0652886	110	213	0,270	15	TP01	236,00

Sockets for making inlets on the VBF ventilation branch. Jointing by butt welding. - Nástavec vstupů na větrací větví VBF. Spojování tupým svařováním.

T-TRAP Triplus gully, trapped and accessible, vertical and horizontal connections

Výpust s vertikálními a
horizontálními vstupy



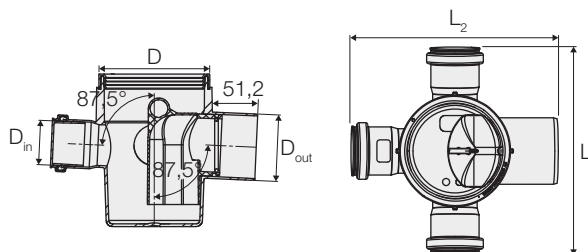
COD.	D	D _{in}	D _{out}	L ₁	L ₂	L ₃	kg				HxLxP	CL	Kč/ks
VS0701741	110	3x50	1x75	220	230	200	0,615	5	20	60	955x800x1200	SF01	1143,00

Gully trap with water seal consisting of an upper inlet diameter 110 mm with socket and sealing gasket, 3 side inlets (closed and prearranged for drilling) and 1 side outlet. 75 mm water seal realized through a removable insert with 100 mm removal space. Supplied complete with adjustable lower support for ceiling mounting.

Trubka sifonového hřídele sestávající z horního vstupu, průměr 110 mm, s objímkou a těsněním, 3 boční vstupy (které jsou slepé a určené pro vrtání) a 1 boční výstup. Zápachový zápach, 75 mm, skládající se z odnímatelné vložky, k odstranění je zapotřebí 100 mm prostoru. Dodávka včetně spodního otočného držáku pro montáž na strop.

Triplus Trap H 170 mm, fully inspectable with horizontal and vertical connection

H 170 mm, inspekční
vstup pro horizontální
a vertikální připojení



COD.	D	D _{in}	D _{out}	L ₁	L ₂	kg				HxLxP	CL	Kč/ks
VS0701743	110	3x50	1x75	232	232	0,496	5	20	60	955x800x1200	SF01	911,00

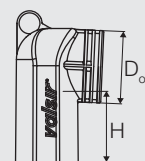
Gully trap with water seal consisting of an upper inlet diameter 110 mm with sealing gasket, 3 side inlets (socket and gasket) and 1 side outlet. 50 mm water seal realized through a removable insert with 100 mm removal space.

Trubka sifonového hřídele sestávající z horního vstupu, průměru 110 mm, s těsněním, 3 bočními vstupy (manžeta a těsnění) a 1 bočním výstupem. Zápachový uzávěr, 50 mm, skládající se z odnímatelné vložky, k odstranění je zapotřebí 100 mm prostoru.

Spare parts - Náhradní díly

Water seal

Těsnění



COD.	D _{out}	H	kg		CL	Kč/ks
VS0701702 *	75	75	0,068	1	SF01	158,00
VS0701709 **	75	50	0,052	1	SF01	141,00

* For code - Pro ART.-NR. VS0701741.

** For code - Pro ART.-NR. VS0701743.

TRIPLUS RANGE
SORTIMENT TRIPLUS

Accessories - Příslušenství

Blank PVC sheet

PVC destička



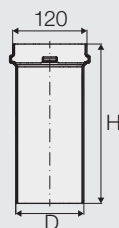
COD.	LxL	kg				HxLxP	CL	Kč/ks
VS0701528	1800x1800	4,607	1	8	56	970x800x1200	SF01	2828,00

Extension

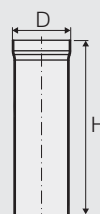
Rozšíření



Mod. A



Mod. B

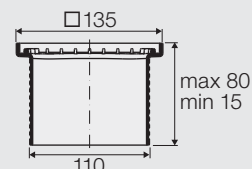


COD.	D	H	Mat.	Mod.	kg		CL	Kč/ks
VS0701031	110	500	PP	A	0,452	1	SF01	252,00
VS0701032	110	150	PP	A	0,135	1	SF01	184,00
VS0701028	110	400	PVC	A	0,522	1	SF01	252,00
VS0701035 •	110	500	PVC	B	0,791	1	SF01	322,00

• Sell out. - *Doprodej.*

Extension with 135x135 mm stainless steel grating

Prodloužení s mřížkou 135x135 mm



COD.	kg		CL	Kč/ks
VS0701660	0,336	1	SF01	411,00

Compatible with the 128x128 mm Design shower gratings. - *Kompatibilní s mřížkami 128x128 mm.*

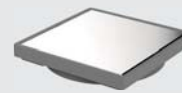
For code. - *Pro ART.-NR. VS0701035.*

Cartable stainless steel with seal

Nerezová mřížka s těsněními



Mod. A



Mod. B

COD.	Mod.	kg				HxLxP	CL	Kč/ks
VS0701205 *	A	0,275	15	240	1200	970x800x1200	SF01	307,00
VS0701207	B	0,286	15	240	1200	970x800x1200	SF01	323,00

* Compatible with the 128x128 mm Design shower gratings. - *Kompatibilní s mřížkami 128x128 mm.*

For codes. - *Pro ART.-NR. VS0701028-VS0701031-VS0701032.* Can also be used without extension. - *Lze použít také bez prodloužení.*

Accessories - Příslušenství

Grid support

Podpora mřížky



Mod. A



Mod. B

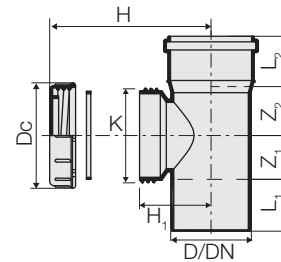


Mod. C

COD.	Mod.	H	kg		CL	Kč/ks
VS0710311	A	5	0,042	1	DS01	697,00
VS0710313	B	9	0,050	1	DS01	164,00
VS0710315	C	13	0,048	1	DS01	101,00

HTRE Inspection opening with screw cap

Čistící kus



COD.	D	DN	Z ₁	L ₁	Z ₂	L ₂	H	Dc	K	H ₁	kg				HxLxP	CL	Kč/ks
VS0650901	50	50	36	48	35	46	65	90	74	57	0,152	20	160	640	1050x800x1200	TP02	293,00
VS0650903	75	70	40	53	43	52	85	90	74	66	0,258	20	80	240	853x800x1200	TP02	359,00
VS0650905	90	90	49	58	55	56	90	120	105	80	0,468	20	80	160	940x800x1200	TP02	475,00
VS0650907	110	100	55	61	65	59	100	120	105	90	0,603	15	60	120	940x800x1200	TP02	558,00
VS0650908 ♦	110	100	78	61	63	59	98	150	128	90	0,721	15	60	120	930x800x1200	TP02	733,00
VS0650909	125	125	65	66	71	65	105	150	128	98	0,928	10	40	80	940x800x1200	TP02	1090,00
VS0650911	160	150	64	75	75	73	125	150	128	118	1,401	1	-	62	930x800x1200	TP02	1678,00
VS0650913 *	200	200	76	145	110	135	150	150	128	142	2,919	1	-	22	930x800x1200	TP02	6896,00
VS0650915 *	250	250	81	170	113	160	165	150	128	158	4,817	1	-	15	930x800x1200	TP02	8541,00

Welded. - Svařované

♦ With insert to achieve continuity of the pipe wall. - S vložkou pro dosažení kontinuity stěny potrubí.

Spare parts - Náhradní díly

Round threaded cap for access pipe

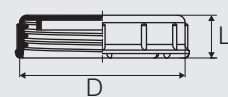
Náhradní šroubovací víčko pro čistící kus



Mod. A



Mod. B

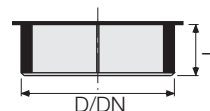


COD.	Mod.	D	L	kg		CL	Kč/ks
VS0650920	A	90/110	29	0,075	25	TP02	230,00
VS0650925	B	125/160	30	0,125	1	TP02	300,00

TRIPLUS RANGE
SORTIMENT TRIPLUS

HTM Closing cap

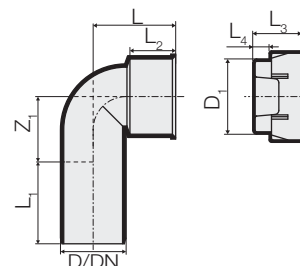
Zátka



COD.	D	DN	L	kg				HxLxP	CL	Kč/ks
VS0503035	32	30	20	0,005	100	2000	14000	935x800x1200	CC01	17,00
VS0650951	40	40	32	0,011	40	800	5600	935x800x1200	TP02	63,00
VS0650953	50	50	32	0,020	20	400	2800	935x800x1200	TP02	95,00
VS0650955	75	70	32	0,025	15	300	2100	935x800x1200	TP02	121,00
VS0650957	90	90	42	0,033	30	240	1680	1110x800x1200	TP02	199,00
VS0650959	110	100	42	0,067	20	160	1120	1110x800x1200	TP02	273,00
VS0650961	125	125	51	0,099	10	80	560	1110x800x1200	TP02	363,00
VS0650963	160	150	57	0,127	10	80	320	1010x800x1200	TP02	452,00

HTSW Bend with cap
for trap connection

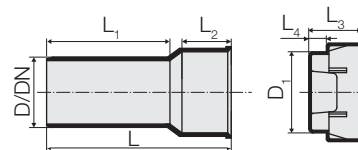
Koleno se zátkou



COD.	D/D ₁	DN	Z ₁	L ₁	L ₂	L ₃	L ₄	L	kg				HxLxP	CL	Kč/ks
VS0650971	32/46	30	23	51	27	30	10	50	0,040	20	320	1600	970x800x1200	TP02	164,00
VS0650972	40/46	40	23	51	30	30	10	50	0,044	20	160	1120	1110x800x1200	TP02	164,00
VS0650973	40/53,5	40	28	52	27	30	10	52	0,047	20	160	1120	1110x800x1200	TP02	164,00
VS0650974	50/53,5	50	28	52	28	30	10	52	0,051	20	160	1120	1110x800x1200	TP02	164,00
VS0650975	50/60	50	28	52	28	30	10	52	0,054	20	160	1120	1110x800x1200	TP02	164,00

HTS Straight fitting
with cap

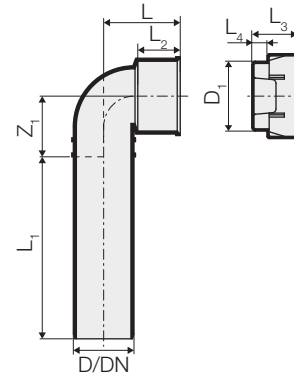
Rovný díl se zátkou



COD.	D/D ₁	DN	L ₁	L ₂	L ₃	L ₄	L	kg				HxLxP	CL	Kč/ks
VS0650981	32/46	30	54	26	30	10	88	0,036	40	320	2240	1110x800x1200	TP02	164,00
VS0650982	40/46	40	54	26	30	10	88	0,035	40	320	2240	1110x800x1200	TP02	164,00
VS0650983	40/50	40	54	28	35	10	88	0,044	20	320	1600	970x800x1200	TP02	164,00
VS0650984	40/53,5	40	38	24	30	10	70	0,032	40	320	2240	1110x800x1200	TP02	164,00
VS0650985	50/53,5	50	54	26	30	10	88	0,040	30	240	1680	1110x800x1200	TP02	164,00

HTSW Long bend for trap connection

Dlouhé koleno se zátkou

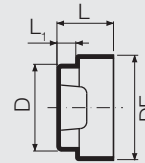


COD.	D/D ₁	DN	Z ₁	L ₁	L ₂	L ₃	L ₄	L	kg				HxLxP	CL	Kč/ks
VS0650991	32/46	30	36	124	28	30	10	50	0,059	20	160	1120	1110x800x1200	TP02	182,00
VS0650992	40/46	40	36	124	28	30	10	50	0,060	20	160	1120	1110x800x1200	TP02	182,00
VS0650993	40/50	40	36	119	32	35	10	50	0,065	20	160	1120	1110x800x1200	TP02	182,00
VS0650996	32/50	30	36	119	28	35	10	53	0,062	20	160	1120	1110x800x1200	TP02	182,00

Accessories - Příslušenství

Protection cap for trap connection bend

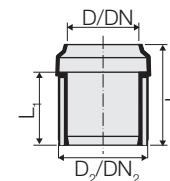
Ochranný kryt pro HTSW a HTS



COD.	D	DE	L	L ₁	kg				HxLxP	CL	Kč/ks
VS0503222	46	55	30	10	0,010	40	800	5600	935x800x1200	CC01	17,00
VS0503224	50	60	35	12	0,016	40	800	5600	935x800x1200	CC01	24,00
VS0503225	53,5	63	30	10	0,013	40	800	5600	935x800x1200	CC01	26,00
VS0503226	60	70	30	10	0,014	40	800	5600	935x800x1200	CC01	26,00

Reducer sleeve

Redukční pouzdro

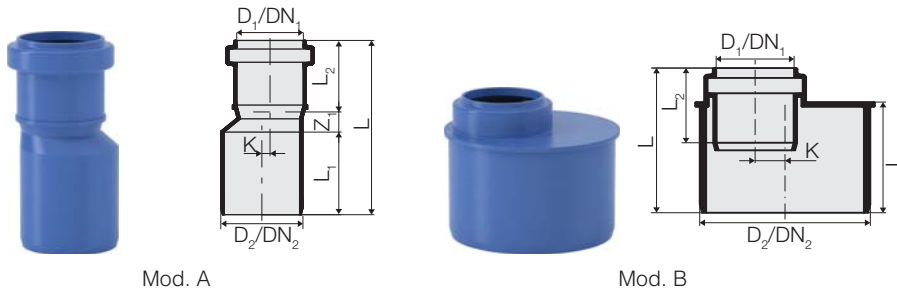


COD.	D/D ₂	DN/DN ₂	L	L ₁	kg				HxLxP	CL	Kč/ks
VS0650790	40/32	40/30	65	50	0,021	100	800	4800	970x800x1200	TP02	101,00
VS0650791	50/40	50/40	56	38	0,026	80	640	3200	1030x800x1200	TP02	101,00
VS0650793	90/75	90/70	76	61	0,059	20	160	640	850x800x1200	TP02	174,00
VS0650795	110/90	100/90	81,5	65	0,109	20	160	640	1010x800x1200	TP02	199,00
VS0650797	125/110	125/100	86	68	0,131	30	120	360	853x800x1200	TP02	431,00

TRIPLUS RANGE
SORTIMENT TRIPLUS

HTR Eccentric reducer

Excentrická redukce

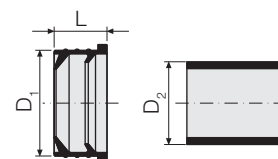


COD.	D ₁ /D ₂	DN ₁ /DN ₂	Mod.	K	Z ₁	L ₁	L ₂	L	kg				HxLxP	CL	Kč/ks
VS0650701	40/32	40/30	A	0	11	44	45	100	0,023	50	400	2800	1000x800x1200	TP02	98,00
VS0650703	50/32	50/30	A	0	14	47	44	105	0,027	40	320	2240	1000x800x1200	TP02	98,00
VS0650705	50/40	50/40	A	5	12	51	44	107	0,058	50	400	2000	1030x800x1200	TP02	98,00
VS0650707	75/40	70/40	B	9	-	56	39	74	0,091	30	240	1680	1110x800x1200	TP02	121,00
VS0650708	75/50	70/50	A	10	22	52	48	122	0,109	20	160	1120	1115x800x1200	TP02	128,00
VS0650709	75/50	70/50	B	4	-	56	42	73	0,099	30	240	1200	1030x800x1200	TP02	121,00
VS0650711	90/40	90/40	B	16	-	59	40	77	0,130	20	160	1120	1110x800x1200	TP02	168,00
VS0650713	90/50	90/50	B	11	-	61	42	78	0,132	20	160	1120	1110x800x1200	TP02	168,00
VS0650715	90/75	90/70	A	5	3	57	47	107	0,162	20	160	640	1010x800x1200	TP02	180,00
VS0650717	110/40	100/40	B	25	-	63	40	79	0,184	20	160	640	1010x800x1200	TP02	180,00
VS0650719	110/50	100/50	B	20	-	63	42	80	0,191	20	160	640	1010x800x1200	TP02	180,00
VS0650720	110/75	100/70	A	15	28	59	55	142	0,227	20	160	480	1030x800x1200	TP02	185,00
VS0650721	110/75	100/70	B	7	-	63	47	80	0,210	20	160	640	1010x800x1200	TP02	180,00
VS0650723	110/90	100/90	A	7	3	60	50	113	0,310	20	80	320	1080x800x1200	TP02	205,00
VS0650729	125/110	125/100	A	4	6	67	49	122	0,338	20	80	240	970x800x1200	TP02	324,00
VS0650731	160/110	150/100	B	10	-	85	52	103	0,522	1	-	306	930x800x1200	TP02	485,00
VS0650733	160/125	150/125	B	4	-	86	56	105	0,567	1	-	300	930x800x1200	TP02	485,00
VS0650735 *	200/110	200/100	B	10	45	90	55	191	1,006	1	-	90	930x800x1200	TP02	3857,00
VS0650739 *	200/160	200/150	A	18	45	93	77	215	1,108	1	-	100	930x800x1200	TP02	4104,00
VS0650747 *	250/200	250/200	A	23	51	124	135	310	2,317	1	-	36	930x800x1200	TP02	7989,00

* Welded. - Svařované.

Grommet

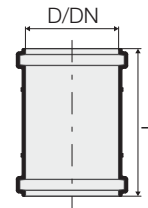
Průchodka



COD.	D ₁	D ₂	L	kg				HxLxP	CL	Kč/ks
VS0334003	46	24-32	22	0,026	100	800	8000	1130x800x1200	CC01	24,00
VS0334005	46	36-40	22	0,012	150	1200	7200	1060x800x1200	CC01	24,00
VS0523011	50	36-40	22	0,026	30	600	4200	935x800x1200	PP02	54,00
VS0523015	53,5	24-32	22	0,029	30	600	4200	935x800x1200	PP02	54,00
VS0523017	53,5	36-40	22	0,025	30	600	4200	935x800x1200	PP02	54,00
VS0523019	60	46-55	24	0,020	30	600	4200	935x800x1200	PP02	102,00

HTU Sliding sleeve

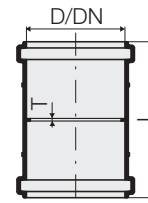
Posuvné hrdlo



COD.	D	DN	L	kg				HxLxP	CL	Kč/ks
VS0650801	32	30	86	0,023	60	480	3360	1000x800x1200	TP02	82,00
VS0650803	40	40	100	0,049	30	240	1680	1110x800x1200	TP02	87,00
VS0650805	50	50	105	0,060	30	240	1680	1110x800x1200	TP02	95,00
VS0650807	75	70	120	0,149	20	160	640	1010x800x1200	TP02	139,00
VS0650809	90	90	120	0,189	20	160	480	1015x800x1200	TP02	194,00
VS0650811	110	100	136	0,287	20	80	240	970x800x1200	TP02	215,00
VS0650813	125	125	147	0,405	20	80	160	940x800x1200	TP02	402,00
VS0650815	160	150	180	0,745	1	-	100	930x800x1200	TP02	604,00
VS0650817	200	200	220	1,512	1	-	45	930x800x1200	TP02	3318,00
VS0650819	250	250	290	3,225	1	-	20	930x800x1200	TP02	6417,00

HTMM Double socket sleeve

Hrdlo – spojka

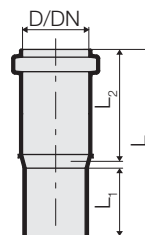


COD.	D	DN	L	T	kg				HxLxP	CL	Kč/ks
VS0650851	32	32	85	2	0,023	60	480	3360	1000x800x1200	TP02	82,00
VS0650853	40	40	100	2	0,050	30	240	1680	1110x800x1200	TP02	87,00
VS0650855	50	50	105	2	0,061	30	240	1680	1110x800x1200	TP02	95,00
VS0650857	75	70	120	2	0,149	20	160	640	1010x800x1200	TP02	139,00
VS0650859	90	90	120	3	0,205	20	160	480	1015x800x1200	TP02	194,00
VS0650861	110	100	136	3	0,315	20	80	240	970x800x1200	TP02	215,00
VS0650863	125	125	147	3	0,439	20	80	160	940x800x1200	TP02	402,00
VS0650865	160	150	180	3	0,800	1	-	100	930x800x1200	TP02	604,00
VS0650867	200	200	220	4	1,529	1	-	45	930x800x1200	TP02	3318,00
VS0650869	250	250	290	4	3,371	1	-	22	930x800x1200	TP02	6417,00

TRIPLUS RANGE
SORTIMENT TRIPLUS

HTL2 Double depth socket

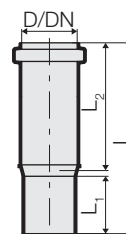
Dvojitá délka spojky



COD.	D	DN	L ₁	L ₂	L	kg				HxLxP	CL	Kč/ks
VS0650751	40	40	47	75	126	0,049	30	240	1440	965x800x1200	TP02	185,00
VS0650753	50	50	48	79	131	0,056	20	160	1120	1110x800x1200	TP02	201,00
VS0650755	75	70	53	90	150	0,134	20	160	480	1015x800x1200	TP02	236,00
VS0650757	90	90	56	95	159	0,207	10	80	400	1030x800x1200	TP02	309,00
VS0650759	110	100	61	100	169	0,348	20	80	240	970x800x1200	TP02	321,00
VS0650761	125	125	66	108	182	0,418	10	80	160	1050x800x1200	TP02	423,00

HTLL3 Triple depth socket

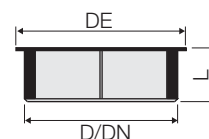
Trojité délka spojky



COD.	D	DN	L ₁	L ₂	L	kg				HxLxP	CL	Kč/ks
VS0650771	40	40	47	100	152	0,053	30	240	1440	965x800x1200	TP02	185,00
VS0650773	50	50	48	107	160	0,070	20	160	1120	1110x800x1200	TP02	201,00
VS0650775	75	70	53	124	183	0,168	20	160	480	1015x800x1200	TP02	236,00
VS0650777	90	90	56	129	193	0,253	10	80	320	1010x800x1200	TP02	309,00
VS0650779	110	100	61	136	205	0,382	20	80	160	940x800x1200	TP02	321,00
VS0650781	125	125	66	145	220	0,544	10	40	120	853x800x1200	TP02	431,00

Protection cap for socket

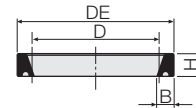
Ochranná krytka



COD.	D	DN	DE	L	kg				HxLxP	CL	Kč/ks
VS0503035	32	30	37,5	22	0,005	100	2000	14000	935x800x1200	CC01	17,00
VS0503001	40	40	46	38	0,007	40	800	5600	935x800x1200	CC01	17,00
VS0503003	50	50	56	37	0,011	50	800	4000	970x800x1200	CC01	17,00
VS0503005	75	70	85	38	0,020	30	480	2400	970x800x1200	CC01	20,00
VS0503008	90	90	102	37	0,029	30	240	1440	970x800x1200	CC01	25,00
VS0503007	110	100	123	39	0,043	30	240	960	1010x800x1200	CC01	25,00
VS0503009	125	125	135	38	0,045	20	160	640	1010x800x1200	CC01	35,00
VS0503011	160	150	170	51	0,146	10	80	320	970x800x1200	CC01	83,00
VS0503013	200	200	210	56	0,157	10	-	-	-	CC01	83,00

Single-lipped seal

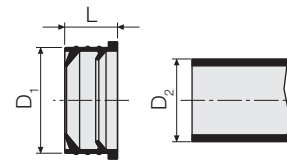
Těsnění



COD.	D	DN	DE	H	B	kg		CL	Kč/ks
VS0391001	32	30	40,5	6	4,9	0,003	50	CC01	13,00
VS0391003	40	40	51,4	7,8	6,5	0,005	50	CC01	13,00
VS0391005	50	50	61,4	7,8	6,5	0,007	50	CC01	13,00
VS0391011	75	70	86,6	7,8	6,5	0,010	20	CC01	15,00
VS0391013	90	80	103	8,9	7,5	0,013	20	CC01	19,00
VS0391015	110	100	123,9	8,9	7,9	0,020	20	CC01	19,00
VS0391017	125	125	142,2	10,2	8,9	0,029	20	CC01	30,00
VS0391019	160	150	179,8	11,5	10,2	0,046	20	CC01	39,00
VS0391021	200	200	223,7	12,8	11,2	0,079	20	CC01	69,00
VS0391023	250	250	282	19,5	16	0,110	10	CC01	137,00

Grommet for socket to connect pipes of other materials

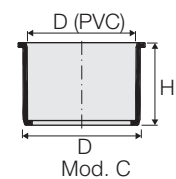
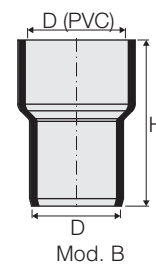
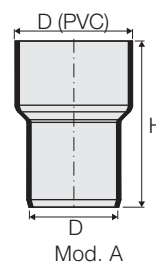
Průchodka



COD.	D ₁ (PP)	D ₂ (Metal)	L	kg				HxLxP	CL	Kč/ks
VS0559001	40	26-28	24	0,013	50	1000	7000	960x800x1050	PP02	49,00
VS0559003	40	30-32	25	0,012	50	1000	7000	960x800x1050	PP02	49,00

PVC reducer socketed adaptor

Redukce – adaptér

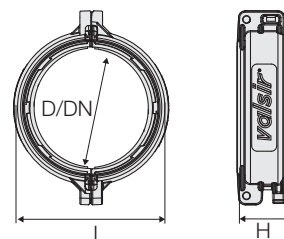



COD.	Mod.	D (PVC)	D	H	kg				HxLxP	CL	Kč/ks
VS0531323	A	43	40	80	0,040	50	-	-	-	TP02	405,00
VS0531325	A	56	50	88,5	0,062	50	-	-	-	TP02	494,00
VS0531326	B	60	50	90	0,064	50	-	-	-	TP02	570,00
VS0531327	C	70	75	53	0,048	30	240	1680	1075x800x1200	TP02	506,00
VS0531333	A	125	110	300	0,465	10	40	120	970x800x1200	PP02	864,00
VS0531335	A	140	110	420	0,708	5	20	60	970x800x1200	PP02	1430,00
VS0531337	A	150	125	420	0,859	5	20	60	1039x800x1200	PP02	1517,00

TRIPLUS RANGE
SORTIMENT TRIPLUS

**Anti-loosening collar
without grommet**

Objímka bez průchodky



COD.	D	L	H	kg		CL	Kč/ks
VS0415003	32	51	38	0,048	10	CC01	152,00
VS0415004	40	63	42	0,062	10	CC01	161,00
VS0415005	50	77	42	0,080	10	CC01	177,00
VS0415007	75	100	46	0,101	10	CC01	210,00
VS0415009	90	117	49	0,138	10	CC01	264,00
VS0415011	110	141	52	0,152	10	CC01	475,00
VS0415012	125	159,2	53	0,228	10	CC01	642,00
VS0415016	160	197,2	57	0,300	10	CC01	853,00
VS0415020	200	242,2	74	0,460	10	CC01	1393,00
VS0415025	250	306,2	86,5	0,900	10	CC01	2129,00

Accessories - Příslušenství

Gasket for restraint collars

Těsnění pro upevňovací sponu



COD.	D	kg		CL	Kč/ks
VS0415103	32	0,011	10	CC01	60,00
VS0415104	40	0,016	10	CC01	60,00
VS0415105	50	0,018	10	CC01	62,00
VS0415107	75	0,022	10	CC01	67,00
VS0415109	90	0,024	10	CC01	69,00
VS0415111	110	0,032	10	CC01	73,00

Gaskets must be installed on the s restraint collar to prevent the inlet of concrete or dirt if this is possible. If it is necessary to use the gasket, 2 pieces should be used per collar. - Těsnění jsou připevněna k upevňovací sorce, aby se zabránilo vniknutí cementu nebo nečistot.

WASTE SYSTEMS ACCESSORIES

ABFLUSSSYSTEME ZUBEHÖR

Protective cap for pipe

Ochranná zátka pro trubky

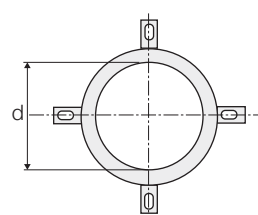


PP3 - TRIPLUS - BLACKFIRE - SILERE - HDPE

COD.	D	H	kg				HxLxP	CL	Kč/ks
VS0503033	50	30	0,008	50	800	4000	970x800x1200	CC01	20,00
VS0503015	75	29	0,018	30	480	2400	970x800x1200	CC01	24,00
VS0503017	90	30	0,022	30	240	1440	1000x800x1200	CC01	28,00
VS0503018	110	38,6	0,029	30	240	960	930x800x1200	CC01	33,00
VS0503019	125	39	0,036	20	160	960	1000x800x1200	CC01	41,00
VS0503031	160	49,5	0,062	10	80	320	930x800x1200	CC01	74,00

Firestop collar Tecnocollar

Protipožární objímka



PP3 - TRIPLUS - BLACKFIRE - SILERE - HDPE

COD.	d Internal d Průměr	H height H Výška	Nr. of fixing Počet upevnění	kg		CL	Kč/ks
VS0411051	32	50	4	0,098	5	CC01	727,00
VS0411053	40	50	4	0,129	5	CC01	755,00
VS0411055	55	50	4	0,159	5	CC01	767,00
VS0411057	63	50	4	0,163	5	CC01	865,00
VS0411059	75	50	4	0,214	5	CC01	926,00
VS0411061	82	50	4	0,220	5	CC01	941,00
VS0411063	90	50	4	0,266	5	CC01	1063,00
VS0411065	110	50	4	0,355	10	CC01	1194,00
VS0411067	125	60	4	0,655	5	CC01	1811,00
VS0411069	140	60	4	0,775	1	CC01	2145,00
VS0411071	160	60	4	1,180	10	CC01	2427,00
VS0411073	200	75	6	1,259	1	CC01	7754,00
VS0411075	250	75	6	1,715	1	CC01	10012,00
VS0411077	315	75	6	2,494	1	CC01	13369,00

Once the pipe has been installed, it is necessary to seal the pipe and hole on both sides of the wall or slab, using Tecno-S 240 acrylic silicone by Marvon S.r.l. (VS0411090).

Po položení potrubí musí být oblast mezi trubkou a otvorem na obou stranách stěny nebo podlahy pokryta akrylovým silikonem Tecno-S 240 od společnosti Marvon S.r.l. být zapečetěn. (VS0411090).

Accessories - Příslušenství

Tecno-S 240 sealant

Tmel Tecno-S 240

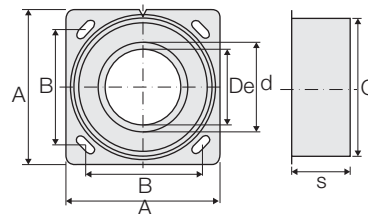


COD.	Conf.		CL	Kč/ks
VS0411090	310 ml	25	CC01	208,00


EQUIPMENT AND ACCESSORIES OF WASTE SYSTEMS PŘÍSLUŠENSTVÍ ODPADOVÝCH SYSTÉMŮ

Collarwings fire stop collar EI 240

Protipožární objímka

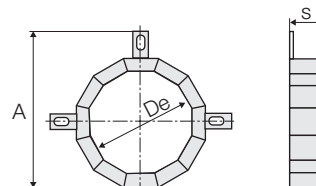


PP3 - TRIPLUS - BLACKFIRE - SILERE - HDPE


COD.	De (pipe - rohr)	d	A	B	C	s	kg		CL	Kč/ks
VS0411000	32	42	101	77	79	49,5	0,410	1	CC01	1680,00
VS0411001	40	50	114	87	92	49,5	0,518	1	CC01	1680,00
VS0411003	50	60	129	95	107	49,5	0,653	1	CC01	1680,00
VS0411005	56-58	68	142	106	120	49,5	0,720	1	CC01	2096,00
VS0411007	63	75	154	115	132	49,5	0,872	1	CC01	2096,00
VS0411009	75	87	171	126	149	49,5	1,015	1	CC01	2466,00
VS0411010	78-80	94	188	133	156	49,5	1,135	1	CC01	2590,00
VS0411011	90	106	193	145	171	89,5	2,158	1	CC01	3452,00
VS0411012	100	116	212	156	190	89,5	2,616	1	CC01	3452,00
VS0411013	110	128	225	167	202	89,5	2,730	1	CC01	3452,00
VS0411015	125	143	248	181	226	89,5	3,270	1	CC01	4345,00
VS0411016	135	155	260	193	238	89,5	3,125	1	CC01	5148,00
VS0411017	160	180	294	217	272	89,5	4,383	1	CC01	6811,00

Fire collar EI 120

Protipožární objímka

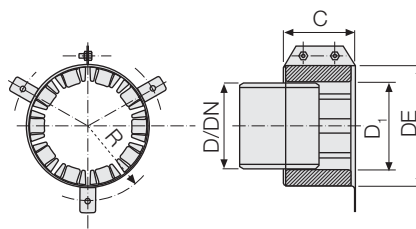


TRIPLUS - HDPE

COD.	D	DN	s	A	kg		CL	Kč/ks
VS0410019	200	200	177,5	257	4,148	1	CC01	13522,00
VS0410021	250	250	232,5	319	6,578	1	CC01	20145,00
VS0410023	315	300	330	395	13,470	1	CC01	40853,00

Fire collar EI 180

Protipožární objímka



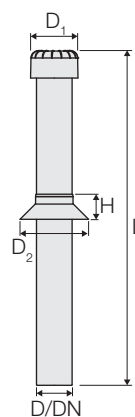
SILERE

COD.	D	DN	D ₁	DE	C	kg		CL	Kč/ks
VS0270005 •	58	50	65	95	80	0,313	1	SL02	3532,00
VS0270007 •	78/90	70/90	95	140	80	0,764	1	SL02	4657,00
VS0270013 •	135	125	144	195	110	1,140	1	SL02	6383,00
VS0270015 •	160	150	166	215	120	1,228	1	SL02	6886,00

• Sell out. - *Ausverkauf.*

PP vent cowl

Odvětrávací kus

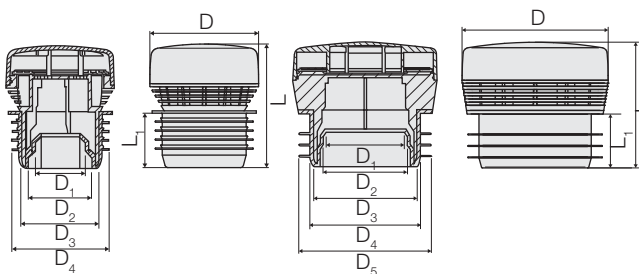


PP3 - TRIPLUS - BLACKFIRE - SILERE - HDPE

COD.	D	DN	D ₁	D ₂	L	H	kg				HxLxP	CL	Kč/ks
VS0394010	50	50	100	120	705	53	0,282	10	30	120	1090x800x1200	CC01	763,00
VS0394011	75	70	100	145	705	53	0,398	5	15	60	1105x800x1200	CC01	847,00
VS0394012	90	90	135	160	705	53	0,528	5	15	45	1105x800x1200	CC01	900,00
VS0394013	110	100	135	180	705	53	0,778	5	15	45	1200x800x1200	CC01	955,00

Air admittance valve

Ventil pro přívod vzduchu



VS0700401

VS0700402

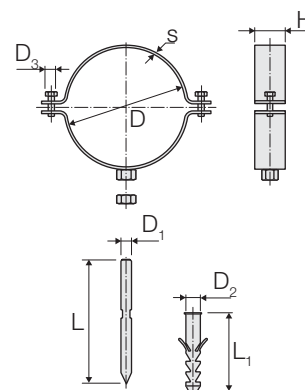
PP3 - TRIPLUS - BLACKFIRE - SILERE - HDPE

COD.	D	D ₁	D ₂	D ₃	D ₄	D ₅	L	L ₁	kg		CL	Kč/ks
VS0700401	70	32	40	50	63	-	79,5	35	0,102	12	SF01	1456,00
VS0700402	125	70	75	90	100	110	108	46	0,358	6	SF01	2682,00

EQUIPMENT AND ACCESSORIES OF WASTE SYSTEMS
PŘÍSLUŠENSTVÍ ODPADOVÝCH SYSTÉMŮ

M10 galvanized pipe clip with anchor, for fixed and sliding point

Objímka – set



PP3 - TRIPLUS -BLACKFIRE - HDPE

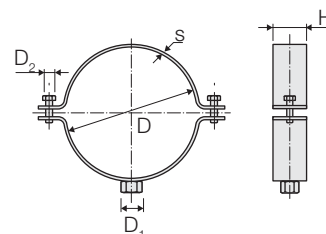
COD.	D	H	D ₁ xL	D ₂ xL ₁	D ₃	s	kg		CL	Kč/ks
VS0395001	40	30	M10x120	12x60	M6	2,5	0,216	50	CC01	100,00
VS0395003	50	30	M10x120	12x60	M6	2,5	0,234	50	CC01	110,00
VS0395004	56	30	M10x120	12x60	M6	2,5	0,242	50	CC01	121,00
VS0395005	63	30	M10x120	12x60	M6	2,5	0,256	50	CC01	121,00
VS0395007	75	30	M10x120	12x60	M6	2,5	0,276	25	CC01	121,00
VS0395009	90	30	M10x120	12x60	M6	2,5	0,305	25	CC01	121,00
VS0395011	110	30	M10x120	12x60	M6	2,5	0,339	25	CC01	121,00
VS0395013	125	30	M10x120	12x60	M6	2,5	0,370	25	CC01	137,00
VS0395015	160	30	M10x120	12x60	M6	2,5	0,423	25	CC01	152,00

The clips are designed in order to allow fixed and sliding point installations by simply rotating the lower part of the clip itself by 180°.

- Dank des Funktionsprinzips können durch einfaches Drehen des unteren Teils der Schelle um 180° sowohl feste, als auch bewegliche Befestigungspunkte realisiert werden.

M10 galvanized pipe clip, for fixed and sliding point

Objímka



PP3 - TRIPLUS -BLACKFIRE - HDPE

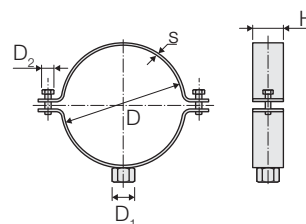
COD.	D	D ₁	D ₂	H	s	kg		CL	Kč/ks
VS0396021	40	M10	M6	30	2,5	0,158	50	CC01	97,00
VS0396023	50	M10	M6	30	2,5	0,177	50	CC01	107,00
VS0396024	56	M10	M6	30	2,5	0,184	50	CC01	117,00
VS0396025	63	M10	M6	30	2,5	0,199	50	CC01	117,00
VS0396027	75	M10	M6	30	2,5	0,220	25	CC01	117,00
VS0396029	90	M10	M6	30	2,5	0,250	25	CC01	117,00
VS0396031	110	M10	M6	30	2,5	0,286	25	CC01	117,00
VS0396033	125	M10	M6	30	2,5	0,309	25	CC01	133,00
VS0396035	160	M10	M6	30	2,5	0,376	25	CC01	150,00

The clips are designed in order to allow fixed and sliding point installations by simply rotating the lower part of the clip itself by 180°.


Dank des Funktionsprinzips können durch einfaches Drehen des unteren Teils der Schelle um 180° sowohl feste, als auch bewegliche Befestigungspunkte realisiert werden.

G1/2" and G1" galvanized pipe clip, for fixed and sliding point

Objímka



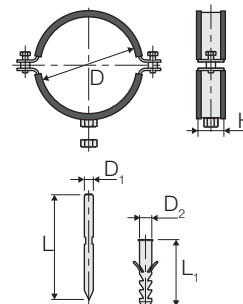
PP3 - TRIPLUS - BLACKFIRE - HDPE

COD.	D	D ₁	D ₂	H	s	kg		CL	Kč/ks
VS0396001 *	40	G1/2"	M6	30	2,5	0,176	50	CC01	97,00
VS0396003 *	50	G1/2"	M6	30	2,5	0,194	50	CC01	107,00
VS0396004 *	56	G1/2"	M6	30	2,5	0,208	50	CC01	117,00
VS0396005 *	63	G1/2"	M6	30	2,5	0,215	50	CC01	117,00
VS0396007 *	75	G1/2"	M6	30	2,5	0,240	25	CC01	117,00
VS0396009 *	90	G1/2"	M6	30	2,5	0,268	25	CC01	117,00
VS0396011 *	110	G1/2"	M6	30	2,5	0,308	25	CC01	117,00
VS0396013 *	125	G1/2"	M6	30	2,5	0,329	25	CC01	133,00
VS0396015 *	160	G1/2"	M6	30	2,5	0,394	25	CC01	150,00
VS0396050	200	G1"	M8	40	4	0,651	10	CC01	465,00
VS0396052	250	G1"	M8	40	4	1,270	10	CC01	498,00
VS0396054	315	G1"	M8	40	4	1,564	10	CC01	537,00


* The clips are designed in order to allow fixed and sliding point installations by simply rotating the lower part of the clip itself by 180°. - Díky funkčnímu principu lze vytvořit pevné i pohyblivé upevňovací body jednoduchým otočením spodní části svorky o 180°.

M10 galvanized pipe clip with anchor and anti-vibration strip, for fixed and sliding point

Objímka – set s gumou



PP3 - TRIPLUS - BLACKFIRE - SILERE - HDPE

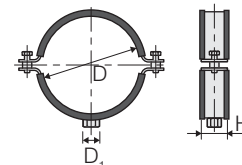
COD.	D	H	L	L ₁	D ₁	D ₂	Screw Šroub	kg		CL	Kč/ks
VS0395021	40	30	120	75	M10	14	M6x20	0,236	50	CC01	145,00
VS0395022	50	30	120	75	M10	14	M6x20	0,260	50	CC01	151,00
VS0395023	56	30	120	75	M10	14	M6x20	0,281	50	CC01	158,00
VS0395024	58	30	120	75	M10	14	M6x20	0,277	50	CC01	158,00
VS0395025	63	30	120	75	M10	14	M6x20	0,291	50	CC01	166,00
VS0395026	75	30	120	75	M10	14	M6x20	0,318	25	CC01	179,00
VS0395027	78	30	120	75	M10	14	M6x20	0,309	25	CC01	179,00
VS0395028	90	30	120	75	M10	14	M6x20	0,354	25	CC01	197,00
VS0395029	110	30	120	75	M10	14	M6x20	0,399	25	CC01	199,00
VS0395030	125	30	120	75	M10	14	M6x20	0,439	25	CC01	224,00
VS0395031	135	30	120	75	M10	14	M6x20	0,469	25	CC01	241,00
VS0395032	160	30	120	75	M10	14	M6x20	0,522	25	CC01	273,00


EQUIPMENT AND ACCESSORIES OF WASTE SYSTEMS
PŘÍSLUŠENSTVÍ ODPADOVÝCH SYSTÉMŮ

M10 galvanized pipe clip with anti-vibration strip, for fixed and sliding point

Pozinkovaná spona M10 s ochranou proti vibracím, pevné / pohyblivé upevnění

PP3 - TRIPLUS - BLACKFIRE - SILERE - HDPE

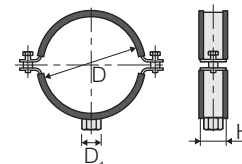



COD.	D	D ₁	H	kg		CL	Kč/ks
VS0396081	40	M10	30	0,179	50	CC01	120,00
VS0396082	50	M10	30	0,205	50	CC01	125,00
VS0396083	56	M10	30	0,219	50	CC01	135,00
VS0396084	58	M10	30	0,221	50	CC01	135,00
VS0396085	63	M10	30	0,234	50	CC01	142,00
VS0396086	75	M10	30	0,258	25	CC01	155,00
VS0396087	78	M10	30	0,253	25	CC01	155,00
VS0396088	90	M10	30	0,291	25	CC01	172,00
VS0396089	110	M10	30	0,346	25	CC01	174,00
VS0396090	125	M10	30	0,384	25	CC01	199,00
VS0396091	135	M10	30	0,407	25	CC01	224,00
VS0396092	160	M10	30	0,469	25	CC01	248,00

G1/2" and G1" galvanized pipe clip with anti-vibration strip, for fixed and sliding point

Pozinkovaná svorka G1 / 2 "a G1" s ochranou proti vibracím, pevné / pohyblivé upevnění

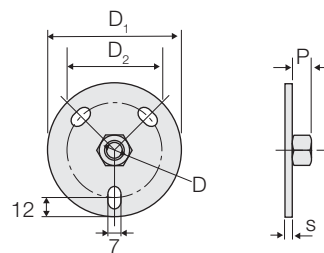
PP3 - TRIPLUS - BLACKFIRE - SILERE - HDPE



COD.	D	D ₁	H	kg		CL	Kč/ks
VS0396061	40	G1/2"	30	0,198	50	CC01	120,00
VS0396062	50	G1/2"	30	0,224	50	CC01	125,00
VS0396063	56	G1/2"	30	0,238	50	CC01	135,00
VS0396064	58	G1/2"	30	0,241	50	CC01	135,00
VS0396065	63	G1/2"	30	0,252	50	CC01	142,00
VS0396066	75	G1/2"	30	0,277	25	CC01	155,00
VS0396067	78	G1/2"	30	0,272	25	CC01	155,00
VS0396068	90	G1/2"	30	0,319	25	CC01	172,00
VS0396069	110	G1/2"	30	0,365	25	CC01	174,00
VS0396070	125	G1/2"	30	0,401	25	CC01	199,00
VS0396071	135	G1/2"	30	0,427	25	CC01	224,00
VS0396072	160	G1/2"	30	0,484	25	CC01	248,00
VS0396073	200	G1"	40	1,257	10	CC01	555,00
VS0396074	250	G1"	40	1,496	10	CC01	621,00
VS0396075	315	G1"	40	1,798	10	CC01	750,00

Galvanized steel flange for wall fixing

Upevňovací příruba



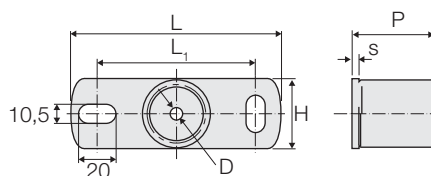
PP3 - TRIPLUS - BLACKFIRE - SILERE - HDPE

COD.	D	P	s	D ₁	D ₂	kg		CL	Kč/ks
VS0398001	G1/2"	15	4	70	50	0,141	100	CC01	78,00

This flange is used to secure the clips directly to the wall or ceiling. - Příruba se používá k připevnění svorek přímo ke stěně nebo stropu.

Galvanized steel plate for wall fixing

Příruba z pozinkované oceli pro montáž na zeď

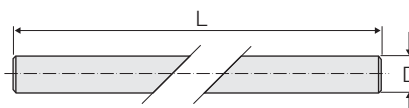


PP3 - TRIPLUS - BLACKFIRE - SILERE - HDPE

COD.	D	L	H	P	s	L ₁	kg		CL	Kč/ks
VS0398004	G1/2"	120	40	20	4	82	0,165	25	CC01	195,00
VS0398005	G1"	120	40	50	4	90	0,236	25	CC01	177,00
VS0398007	M10	80	30	13	2	52	0,060	25	CC01	92,00

M10 Threaded rod

Závitová tyč M10



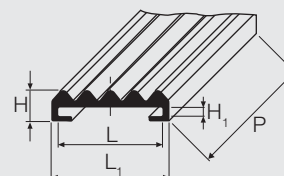
PP3 - TRIPLUS - BLACKFIRE - SILERE - HDPE

COD.	D	L	kg		CL	Kč/ks
VS0408001	M10	1000	0,418	1	CC01	86,00

Accessories - Příslušenství

Anti-vibration strip for pipe clips

Páska tlumící vibrace



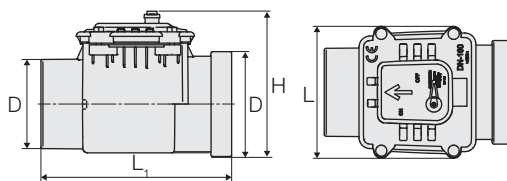
PP3 - TRIPLUS - BLACKFIRE - SILERE - HDPE

COD.	L	L ₁	H	H ₁	P (m)	kg		CL	Kč/ks
VS0399222	30	36	9	3	30	5,427	1	CC01	4953,00
VS0399224	40	46	9	4	10	2,393	1	CC01	1896,00


EQUIPMENT AND ACCESSORIES OF WASTE SYSTEMS
PŘÍSLUŠENSTVÍ ODPADOVÝCH SYSTÉMŮ

Back flow preventing valve with locking lever

Zpětná klapka



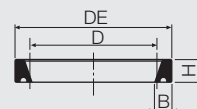
PP3 - TRIPLUS - BLACKFIRE - SILERE - HDPE

COD.	D	L	L ₁	H	kg		CL	Kč/ks
VS0200112	110	190	310	200	1,420	1	SF01	4729,00
VS0200114	125	200	400	270	1,993	1	SF01	5219,00
VS0200116	160	235	340	260	2,035	1	SF01	5675,00
VS0200118	200	304	560	353	6,736	1	SF01	12574,00

Spare parts - Náhradní díly

Single-lipped seal for back flow preventing valves

Těsnění pro zpětnou klapku



PP3 - TRIPLUS - BLACKFIRE - SILERE - HDPE

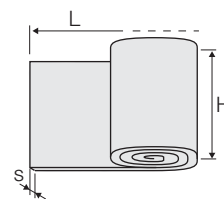
COD.	D	DN	DE	H	B	kg		CL	Kč/ks
VS0391015	110	100	123,9	8,9	7,9	0,020	20	CC01	19,00
VS0391017	125	125	142,2	10,2	8,9	0,029	20	CC01	30,00
VS0391019	160	150	179,8	11,5	10,2	0,046	20	CC01	39,00
VS0391021	200	200	223,7	12,8	11,2	0,079	20	CC01	69,00


EQUIPMENT OF WASTE SYSTEMS PŘÍSLUŠENSTVÍ ODPADOVÝCH SYSTÉMŮ

Thermal acoustic insulation for waste pipes

Tepelná izolace pro odtokové potrubí pohlcující zvuk

HDPE



COD.	Size - Rozměry LxH	s	kg	 (m ²)	CL	Kč/m ²
VS0399252	2000x1000	14	4,814	2	CC01	2119,00

Is an open cell expanded polyurethane resin thickness 12 mm, density 30 kg/m³ self-extinguishing combined with a layer of loaded rubber fireproof GK weighing 4 kg/m² with a thickness of 2 mm. It does not contain bitumen and other noxious substances.


Tato izolace se skládá z expandované polyuretanové pryskyřice s otevřenými buňkami: tloušťka 12 mm, hustota 30 kg samozhášecí UL94 HF1 v kombinaci s vrstvou nehořlavé pryže GK s minerální přísadou 4 kg / m² tloušťky 2 mm. Výrobek je samozhášecí a skládá se z gumových polymerů s přidanými minerály. Výrobek neobsahuje olovo, kadmium, bitumen ani jiné znečišťující látky. Rozměry 2000x1000 mm.

Welding plate with steel box

Svařovací deska s kovovým pouzdem

HDPE




COD.	For pipes - Pro trubky D	kg		CL	Kč/ks
VS0450001	40÷160	6,293	1	ATPE	14104,00
VS0450003	110÷300	11,903	1	ATPE	23868,00

MOD. VR 160 JOYT Portable butt-welding machine with special clamps for branches and bends

Přenosné svařovací zařízení vybavené speciálními svěráky pro spojování potrubí a ohybů

HDPE



COD.	D	kg		CL	Kč/ks
VS0468165	40÷160	102,800	1	ATPE	204992,00

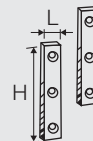
This item does not include reducers and side supports D 56. - *Der Artikel umfasst nicht die Reduzierungen und seitlichen Halterungen D 56.*

EQUIPMENT AND ACCESSORIES OF WASTE SYSTEMS
PŘÍSLUŠENSTVÍ ODPADOVÝCH SYSTÉMŮ

Spare parts - Náhradní díly

Spare blades for shaving mill

Náhradní čepele



HDPE

COD.	H	L	kg		CL	Kč/ks
VS0477510	75	12	0,020	1	ATPE	8576,00

For code - Pro ART.-NR. VS0468165.

Driving belt

Řemen



HDPE

COD.	kg		CL	Kč/ks
VS0477550	0,050	1	ATPE	874,00

For code - Pro ART.-NR. VS0468165.

Pipe lateral support reducing bracket

Redukční držák boční podpory potrubí



HDPE

COD.	D	kg		CL	Kč/ks
VS0477303	40	0,170	1	ATPE	682,00
VS0477305	50	0,169	1	ATPE	682,00
VS0477306	56	0,162	1	ATPE	682,00
VS0477307	63	0,173	1	ATPE	682,00
VS0477309	75	0,150	1	ATPE	682,00
VS0477311	90	0,139	1	ATPE	682,00
VS0477313	110	0,123	1	ATPE	682,00
VS0477315	125	0,099	1	ATPE	682,00


Spare parts - Náhradní díly

Clamp reducer

Redukční svorka



HDPE


COD.	D	Mod.	kg		CL	Kč/ks
VS0477260	40	inferior - spodní	0,720	1	ATPE	688,00
VS0477261	50	inferior - spodní	0,720	1	ATPE	688,00
VS0477262	56	inferior - spodní	0,720	1	ATPE	688,00
VS0477263	63	inferior - spodní	0,720	1	ATPE	688,00
VS0477264	75	inferior - spodní	0,720	1	ATPE	688,00
VS0477265	90	inferior - spodní	0,720	1	ATPE	688,00
VS0477266	110	inferior - spodní	0,720	1	ATPE	688,00
VS0477267	125	inferior - spodní	0,720	1	ATPE	688,00
VS0477268	160	inferior - spodní	0,720	1	ATPE	688,00
VS0477270	40	superior - vrchní	0,720	1	ATPE	688,00
VS0477271	50	superior - vrchní	0,720	1	ATPE	688,00
VS0477272	56	superior - vrchní	0,720	1	ATPE	688,00
VS0477273	63	superior - vrchní	0,720	1	ATPE	688,00
VS0477274	75	superior - vrchní	0,720	1	ATPE	688,00
VS0477275	90	superior - vrchní	0,720	1	ATPE	688,00
VS0477276	110	superior - vrchní	0,720	1	ATPE	688,00
VS0477277	125	superior - vrchní	0,720	1	ATPE	688,00
VS0477278	160	superior - vrchní	0,720	1	ATPE	688,00

Lateral support

Boční držák pro
 svařovací zařízení



HDPE

COD.	kg		CL	Kč/ks
VS0478160	0,235	1	ATPE	1604,00

For code - Pro ART.-NR. VS0468165.

EQUIPMENT AND ACCESSORIES OF WASTE SYSTEMS

PŘÍSLUŠENSTVÍ ODPADOVÝCH SYSTÉMŮ

MOD. SUPER

Portable butt welding machine

Přenosný svařovací stroj



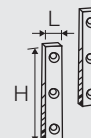
HDPE

COD.	D	kg		CL	Kč/ks
VS0470001	75÷250	83,000	1	ATPE	242924,00

Spare parts - Náhradní díly

Spare blades

Náhradní čepele



HDPE

COD.	H	L	kg		CL	Kč/ks
VS0477525	130	15	0,045	1	ATPE	3024,00

Driving belt

Řemen



HDPE

COD.	kg		CL	Kč/ks
VS0477520	0,061	1	ATPE	548,00


MOD. MAXI

**Welding machine
 with carriage**

Svařovací stroj s vozíkem



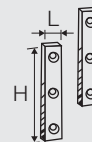
HDPE

COD.	D	kg		CL	Kč/ks
VS0470005	90÷315	217,900	1	ATPE	483658,00


Spare parts - Náhradní díly

Spare blades

Náhradní čepele



HDPE


COD.	H	L	kg		CL	Kč/ks
VS0477535	160	20	0,098	1	ATPE	4284,00

Driving belt

Řemen



HDPE

COD.	kg		CL	Kč/ks
VS0477540	0,050	1	ATPE	1235,00

EQUIPMENT AND ACCESSORIES OF WASTE SYSTEMS
PŘÍSLUŠENSTVÍ ODPADOVÝCH SYSTÉMŮ

**Valsir electrofusion
welding machine
40-160 V2**

Elektrická zásuvková
svářečka Valsir
40-160 V2



HDPE

COD.	D	kg		CL	Kč/ks
VS0464010	40÷160	3,365	1	ATPE	27579,00

Available from 05/2021. - K dispozici od 05/2021.

**Valsir electrofusion
welding machine
40-160 V1**

Elektrická zásuvková
svářečka Valsir
40-160 V1



HDPE

COD.	D	kg		CL	Kč/ks
VS0464001 •	40÷160	3,240	1	ATPE	27579,00

• Sell out. - *Doprodej*

Spare parts - Náhradní díly

**Cable and plugs for Valsir
40-160 V1 electric welding
machine**

Kabel a konektor pro elekt-
rickou zásuvkovou svářečku
Valsir 40-160 V1



HDPE

COD.	kg		CL	Kč/ks
VS0464222	0,308	1	ATPE	3485,00


For code - *Pro ART.-NR.* VS0464001.

Valsir universal electrofusion welding machine

Elektrické svařovací zařízení Valsir univerzální



HDPE

COD.	D	kg		CL	Kč/ks
VS0464333	40÷315	5,357	1	ATPE	59455,00
VS0464331 ©	40÷315	4,877	1	ATPE	59455,00

© Switzerland. - Model pro Švýcarsko.


Spare parts - Náhradní díly

Power cable for Switzerland

Varianta síťového kabelu CH



HDPE


COD.	Version - Varianta	kg		CL	Kč/ks
VS0464431	universal S (mod. 2012)	0,782	1	ATPE	5199,00

Universal power cable

Univerzální napájecí kabel



HDPE


COD.	Version - Varianta	kg		CL	Kč/ks
VS0464433	universal S (mod. 2012)	0,764	1	ATPE	5199,00

Universal lead for plugs

Univerzální kabel pro zástrčky



HDPE

COD.	Version - Varianta	kg		CL	Kč/ks
VS0464435	universal S (mod. 2012)	0,769	1	ATPE	5892,00
VS0464436	universal V1	0,643	1	ATPE	5892,00

EQUIPMENT AND ACCESSORIES OF WASTE SYSTEMS

PŘÍSLUŠENSTVÍ ODPADOVÝCH SYSTÉMŮ

Spare parts - *Náhradní díly*

Plugs

Konektory



HDPE

COD.	D	Colour Barva	Version Varianta	kg		CL	Kč/ks
VS0464334	40÷160	yellow - <i>modrá</i> A00	universal S (mod. 2012)	0,103	1	ATPE	6965,00
VS0464338	40÷160	yellow - <i>žlutá</i> A00	universal V1	0,102	1	ATPE	6965,00
VS0464335	200÷315	blue - <i>modrá</i> A01	universal S (mod. 2012)	0,101	1	ATPE	6965,00
VS0464339	200÷315	blue - <i>modrá</i> A01	universal V1	0,100	1	ATPE	6965,00
VS0464336	200÷315	red - <i>červená</i> A02	universal S (mod. 2012)	0,107	1	ATPE	6965,00
VS0464340	200÷315	red - <i>červená</i> A02	universal V1	0,107	1	ATPE	6965,00
VS0464337	40÷160	green - <i>zelená</i> A03	universal S (mod. 2012)	0,075	1	ATPE	6965,00
VS0464341 •	40÷160	green - <i>zelená</i> A03	universal V1	0,102	1	ATPE	6965,00

• Sell out. - *Ausverkauf.*

Hot air blower

Horkovzdušná pistole



PP3 - HDPE

COD.	Watt	kg		CL	Kč/ks
VS0476001	700	1,789	1	CC01	26598,00

Pipe scraper

Škrabka na potrubí



HDPE


COD.	kg		CL	Kč/ks
VS0465333	0,092	1	ATPE	700,00

Pipe cutter

Řezačka trubek



PP3 - TRIPLUS - BLACKFIRE - SILERE - HDPE

COD.	D	Mod.	kg		CL	Kč/ks
VS0458011	6÷76	T1	0,550	1	CC01	5147,00
VS0458003	50÷140	T2	1,309	1	CC01	7411,00
VS0458005	100÷168	T3	1,384	1	CC01	9171,00

Spare parts - Náhradní díly

Spare blades

Náhradní čepele



PP3 - TRIPLUS - BLACKFIRE - SILERE - HDPE

COD.	D	kg		CL	Kč/ks
VS0459001 •	6÷63	0,006	1	CC01	1081,00
VS0459011	6÷76	0,006	1	CC01	900,00
VS0459003	50÷168	0,025	1	CC01	1359,00


• Sell out. - Ausverkauf.

Pipe cutter

Řezačka trubek



TRIPLUS - HDPE

COD.	D	Mod.	kg		CL	Kč/ks
VS0458007	180÷318	T4	12,600	1	CC01	51735,00


Spare parts - Náhradní díly

Spare blades

Náhradní čepele



TRIPLUS - HDPE

COD.	D	kg		CL	Kč/ks
VS0459007	180÷318	0,017	1	CC01	2686,00


EQUIPMENT AND ACCESSORIES OF WASTE SYSTEMS PŘÍSLUŠENSTVÍ ODPADOVÝCH SYSTÉMŮ

Beveling tool

Zařízení pro srážení hran trubek



PP3 - TRIPLUS - BLACKFIRE - SILERE - HDPE

COD.	D	kg		CL	Kč/ks
VS0460001	32÷160	0,803	1	CC01	6461,00
VS0460003	40÷250	1,385	1	CC01	10676,00


Spare parts - Náhradní díly

Spare blades

Náhradní čepele



PP3 - TRIPLUS - BLACKFIRE - SILERE - HDPE


COD.	D	H	L	kg		CL	Kč/ks
VS0460110	32÷160	32	13	0,025	1 pair - Pár	CC01	2430,00
VS0460111	40÷250	34	12	0,025	1 pair - Pár	CC01	2553,00

Steel cup miller

Ocelová fréza



HDPE

COD.	D	Connections Anschlüsse	kg		CL	Kč/ks
VS0465001	33	40	0,323	1	ATPE	3537,00
VS0465003	43	50	0,343	1	ATPE	3537,00

Chamfering knife

Zkosený nůž



HDPE

COD.	kg		CL	Kč/ks
VS0473001	0,027	1 (12 ks)	ATPE	5238,00

Permanent pens

Permanentní popisovače



PP3 - HDPE


COD.	kg		CL	Kč/ks
VS0474001	0,117	1 (12 ks)	CC01	2097,00

Strip for welding

Pás pro svařování



PP3 - HDPE


COD.	Mat.	L (cm)	mm	kg		CL	Kč/ks
VS0477001	HDPE	100	5,5x3	2,006	1 (2 kg)	ATPE	2842,00
VS0477003	PP	100	5,5X3	2,007	1 (2 kg)	ATPP	3651,00

Lubricant

Mazivo



PP3 - TRIPLUS - BLACKFIRE - SILERE - HDPE

COD.	g	kg		CL	Kč/ks
VS0900001	150	0,161	50	CC01	76,00
VS0900003	250	0,269	50	CC01	91,00
VS0900005	1000	1,000	1	CC01	290,00
VS0900007	5000	5,00	1	CC01	1340,00

